

The top ten issues in WebSphere MQ and WebSphere MB

Barry D. Lamkin
Executive IT Specialist
blamkin@us.ibm.com

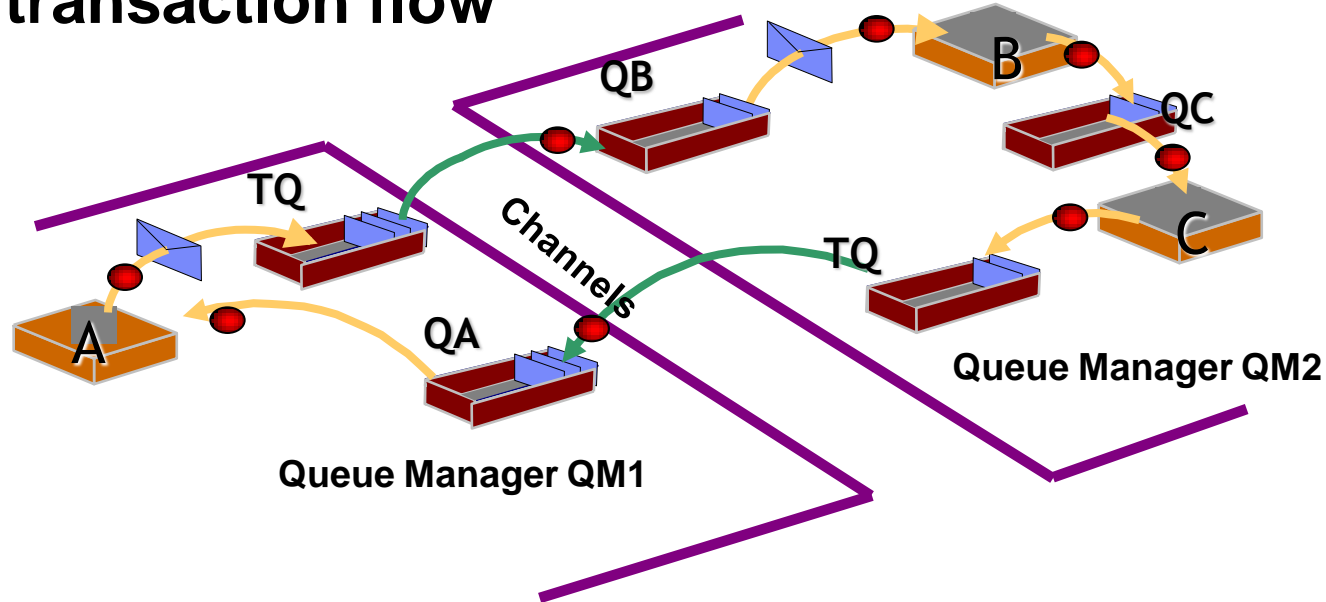
Who Am I?

- **Barry Lamkin**
- **Army Helicopter Pilot 1967 – 1971**
- **Air Traffic Controller 1973 - 1981**
- **MVS (aka z/OS) Systems Programmer 1981 – 1994**
- **Candle Systems Engineer 1994 – 2004**
- **IBM Executive IT Specialist 2004 – whenever**

WebSphere MQ (MQSeries) - Features

- ✓ Assured, exactly once delivery
- ✓ Single API across 45+ platforms
- ✓ Network integration across various network protocols
- ✓ Transactional control
- ✓ Triggering of jobs/programs
- ✓ Content independence
- ✓ Single message > 100MB
- ✓ Asynchronous design (application & platform independent)
- ✓ Parallel processing
- ✓ Robust, commercial middleware
- ✓ Shields developers from network complexities

Monitoring Points used to track transaction flow

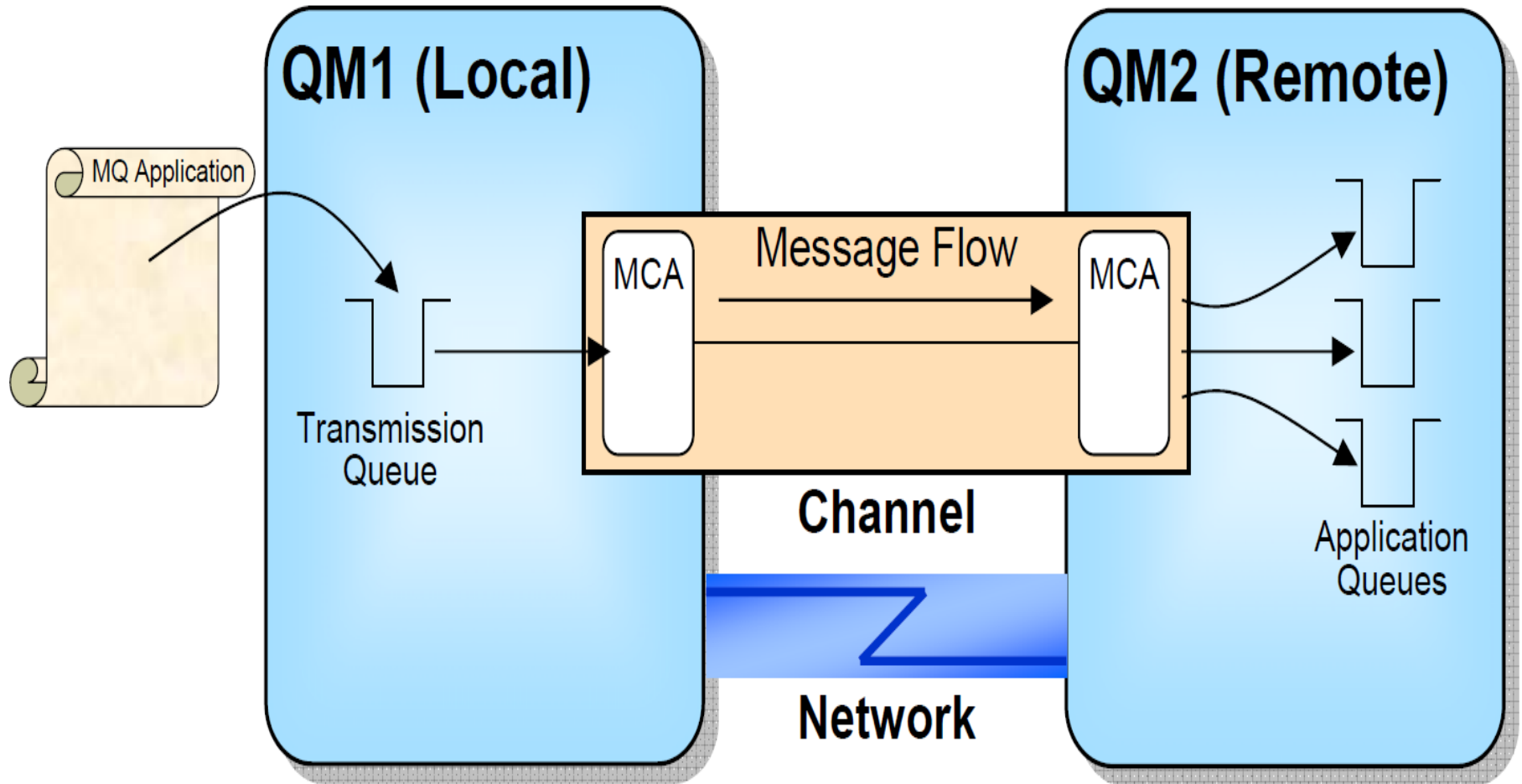


- Application A, B and C are components of a business transaction
- There are many objects that make up the underlying transactions
- There are as many as 8 monitoring points for objects associated to this transaction
- You should Monitor all the objects as it relates to the transaction (queues, channels)
- You should Monitor the flow of messages belonging to specific message queues (get/put rate)
- You need the ability to detect slowdown or stoppage in flow in specific queues (put rate exceeds get rate, channel down)
- You will need to identify problems and automatically react to them.

Top Ten Issues in WMQ & WMB (or more)

- ▶ MQ Channel Down
- ▶ Queue Full
- ▶ Messages in the Dead Letter Queue
- ▶ Messages in a queue and no open processes
- ▶ Isolating MQ problems between IBM z/OS® and distributed systems
- ▶ Changes in the MQ configuration
- ▶ Restoring last valid MQ configuration
- ▶ Determining if slow performance is due to network, MQ or Message Broker
- ▶ Problems connecting to broker's queue manager
- ▶ No messages flowing in the broker
- ▶ Execution Groups or Message Flows not started

MQ Channels



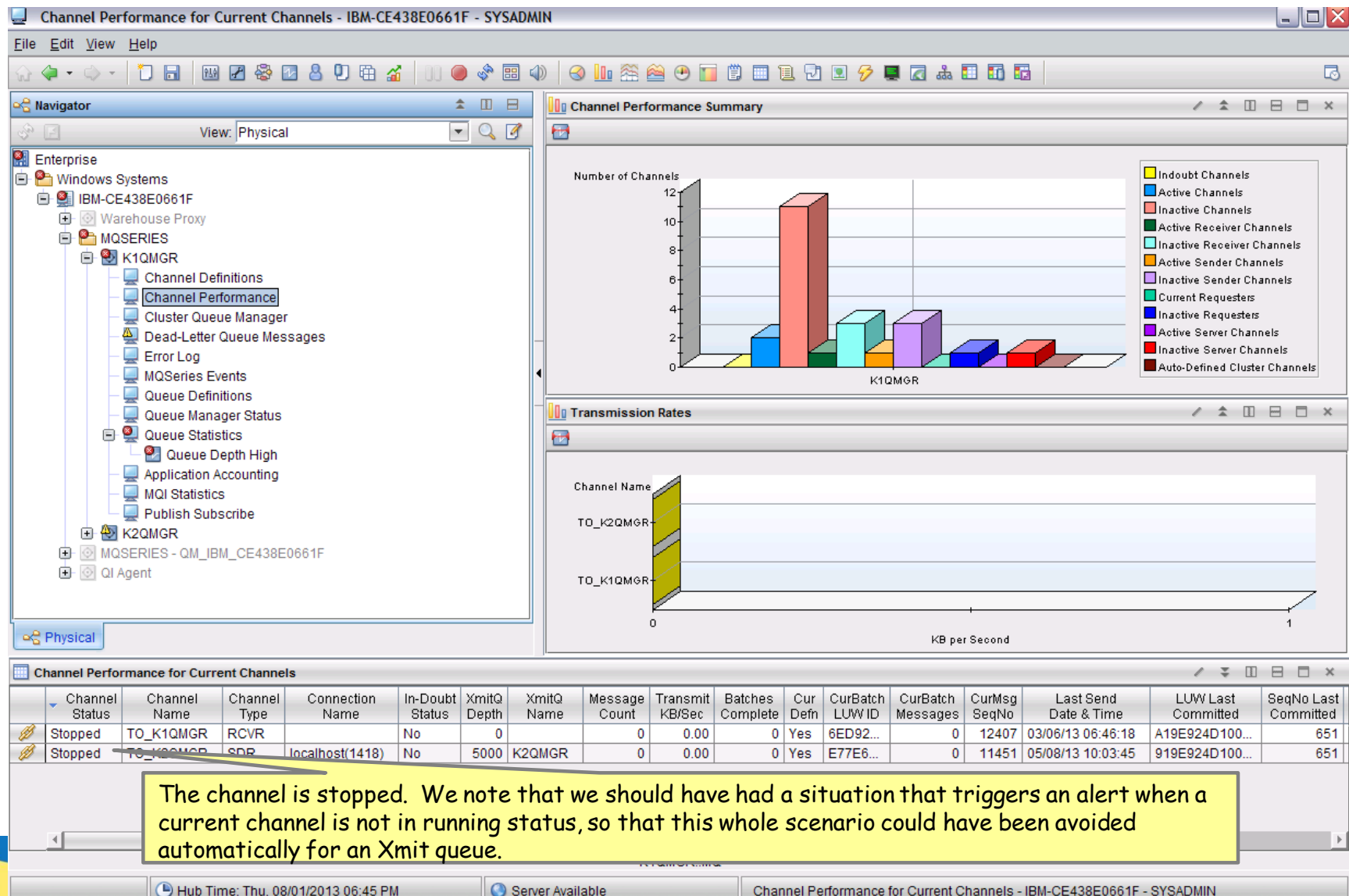
Issues with Channels

- Which channels are running or stopped?
- If my channel is up, is it transmitting messages?
- Are my channels optimally configured?
- If channel performance is poor, how does that impact my clients?

MQ Channel Down

- Is this a problem?
- MQ Event “Channel Stopped” may not be good enough
- Check Channel Status
- Is the Listener running?
- Are there messages in the XmitQ?
- Is the Remote Queue Manager down?
- Is the Remote Queue correct or full?
- Is there a Network problem?

Channel Stopped



Start the Channel

The screenshot shows the IBM MQ Channel Performance console. A 'Take Action' dialog box is open, allowing the user to start a channel. The dialog has a 'Name' field with 'MQ Start Channel' and a 'Command' field with 'MQ:START CHANNEL(TO_K2QMGR)'. Below these fields is a 'Destination Systems' list with 'K1QMGR::MQ' and 'K2QMGR::MQ'. A yellow callout box points to the 'K2QMGR::MQ' row in the main table, containing the following text:

- Right click on the channel row and select the Take Action option, then select the action to start the channel. The channel name for the selected row is automatically filled in.
- If we had the situation to detect the stopped channel, the action to start it could be automated to occur at the time the issue is detected.
- Note that any MQSC command can be configured as a take action, even if it is not product-provided.

The main console window displays a 'Channel Performance Summary' bar chart and a table of channel performance data. The table has columns for Channel Status, Channel Name, Type, Name, Status, Depth, Name, Count, KB/sec, Complete, Dem, LOW ID, Messages, SeqNo, Date & Time, Send, LUW Last Committed, and SeqNo Last Committed. The table shows two channels: 'TO_K1QMGR' (RCVR, No, 0) and 'TO_K2QMGR' (SDR, No, 5000). The 'TO_K2QMGR' channel is highlighted in the table.

Channel Status	Channel Name	Type	Name	Status	Depth	Name	Count	KB/sec	Complete	Dem	LOW ID	Messages	SeqNo	Date & Time	Send	LUW Last Committed	SeqNo Last Committed
Stopped	TO_K1QMGR	RCVR		No	0		0	0.00	0	Yes	6ED92...	0	12407	03/06/13 06:46:18		A19E924D100...	651
Stopped	TO_K2QMGR	SDR	localhost(1418)	No	5000	K2QMGR	0	0.00	0	Yes	E77E6...	0	11451	05/08/13 10:03:45		919E924D100...	651

WebSphere MQ Channel is started but not running

Session C - [62 x 160]

File Edit View Tools Navigate Help 03/10/2014 02:59:14

Command ==> KMQSTART WebSphere MQ Health Overview

Auto Update : Off
HostName :
QmgrName :

Queue Manager Status

Columns 2 to 13 of 24 Rows 1 to 3 of 3

QMgr VName	Host Name	QMgr VHealth	Queue VHealth	Channel VHealth	Current VQEvents	QMgr Status	Channel Initiator	Command Server	Conn #	DLQ Depth	Message # On XMITQ	Total Messages
Q7G5	SYS	Critical	Unknown	Unknown	0	Stopped	Stopped	Stopped	0	0	0	0
Q7G1	SYS	Warning	Warning	Critical	0	Running	Running	Waiting	32	0	0	197
Q7G4	SYS	OK	OK	OK	0	Running	Running	Waiting	0	0	0	0

Queue-Sharing Group Nodes

No Data

Offline WebSphere MQ Monitoring Managed System Nodes

Columns 2 to 5 of 5 Rows 1 to 3 of 3

Managed System	Version	Host Address	Host Info	Managing System
Q722:SP22:MQESA	07.10.00	ip.pipe:#9.42.46.22<NM>SP22</	z/OS®01.12.00	SP22:MQIRA
Q723:SP22:MQESA	07.10.00	ip.pipe:#9.42.46.22<NM>SP22</	z/OS®01.12.00	SP22:MQIRA
SP22:MQIRA	07.10.00	ip.pipe:#9.42.46.22.15657.<NM	z/OS®01.12.00	M5510R22:CMS

Monday March 10 2014

01/003

Connected to remote server/host wlaa.tivlab.raleigh.ibm.com using lu/pool TCPA0035 and port 23



File Edit View Tools Navigate Help 03/10/2014 02:59:14

Auto Update : Off

HostName :

QmgrName :

Command ==>

KMQSTART

WebSphere MQ Health Overview

Queue Manager Status



Columns 2 to 13 of 24

Rows 1 to 3 of 3

QMGr Name	Host Name	QMGr Health	Queue Health	Channel Health	Current QMEvents	QMGr Status	Channel Initiator	Command Server	Conn #	DLQ Depth	Message # On XMITQ	Total Messages
Q7G5	SYS	Critical	Unknown	Unknown	0	Stopped	Stopped	Stopped	0	0	0	0
Q7G1	SYS	Warning	Warning	Critical	0	Running	Running	Waiting	32	0	0	197
Q7G4	SYS	OK	OK	OK	0	Running	Running	Waiting	0	0	0	0

Queue-Sharing Group Nodes

No Data

Offline WebSphere MQ Monitoring Managed System Nodes



Columns 2 to 5 of 5

Rows 1 to 3 of 3

Managed System	Version	Host Address	Host Info	Managing System
Q722:SP22:MQESA	07.10.00	ip.pipe:#9.42.46.22<NM>SP22</	z/OS~01.12.00	SP22:MQIRA
Q723:SP22:MQESA	07.10.00	ip.pipe:#9.42.46.22<NM>SP22</	z/OS~01.12.00	SP22:MQIRA
SP22:MQIRA	07.10.00	ip.pipe:#9.42.46.22.15857.<NM	z/OS~01.12.00	M5510R22:CMS

Monday March 10 2014



File Edit View Tools Navigate Help 03/10/2014 03:00:01

Auto Update : Off

HostName : SYS

QmgrName : Q7G1

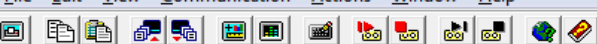
Command ==>

KMQQMSTS

Current Queue Manager Status

Queue Manager Health					
QMGr Name.....	Q7G1	Host Name.....	SYS		
QMGr Health.....	Warning	Connection Count.....	32		
QMGr Status.....	Running	Channel Initiator Status.....	Running		
Command Server Status.....	Waiting	Current MQEvents.....	0		
Queue Health					
Queue Health.....	Warning	DLQ Depth.....	0		
High Depth Queue Count.....	0	Put Inhibited Queue Count.....	0		
Total XMIT Queue Messages.....	0	Get Inhibited Queue Count.....	1		
Total Messages.....	197	Open Queue Count.....	21		
Channel Health					
Channel Health.....	Critical	Indoubt Connections.....	0		
Current Not Running.....	1	Server Connections.....	1		
Current Connections.....	2	% Max Channels.....	1.0		
Active Connections.....	1	% Max Active Channels.....	0.5		
Log Datasets					
Oldest Active UOW Log Dataset Name.....				MQM.V701	
Page Set Recovery Log Dataset Name.....				MQM.V701	
Active Log Copy 1 Dataset Name.....				MQM.V701	
Active Log Copy 2 Dataset Name.....				MQM.V701	

Monday March 10 2014



Command ==> _____ Auto Update : Off
 KMQCHNRS _____ HostName : SYS
 _____ QmgrName : Q7G1

Current Channels Not Running

Columns 2 to 8 of 16						Rows 1 to 1 of 1	
ΔChannel VName	ΔConnection VName	ΔChannel VType	ΔChannel VStatus	In-Doubt Status	User Stop Request	Current Action State	Batches Complete
_ Q7G1.TO.Q7G4	9.42.46.25(4040)	Sender	Retrying	Not In-Doubt	Stop Not Requested	n/a	0

Inactive Channels at Last Sample

Columns 2 to 10 of 12					Rows 1 to 15 of 15				
ΔChannel VName	ΔConnection VName	ΔChannel VType	Channel Status	In-Doubt Status	LUW Last Committed	SeqNo Last Committed	CurBatch Messages	CurBatch LUW ID	+CurMsg SeqNo
- ABC.SDR.CHANNEL	ABC	SDR	Binding	n/a		0	0		0
- CHANNEL1		SVRCONN	Binding	n/a		0	0		0
- Q7G1.TO.Q721	SP22(21426)	SDR	Binding	n/a		0	0		0
- Q721.TO.Q7G1		RCVR	Binding	n/a		0	0		0
- SYSTEM.DEF.CLUSRCVR		CLUSRCVR	Binding	n/a		0	0		0
- SYSTEM.DEF.CLUSSDR		CLUSSDR	Binding	n/a		0	0		0
- SYSTEM.DEF.RECEIVER		RCVR	Binding	n/a		0	0		0
- SYSTEM.DEF.REQUESTER		RQSTR	Binding	n/a		0	0		0
- SYSTEM.DEF.SENDER		SDR	Binding	n/a		0	0		0
- SYSTEM.DEF.SERVER		SVR	Binding	n/a		0	0		0
- SYSTEM.DEF.SVRCONN		SVRCONN	Binding	n/a		0	0		0
- TO.Q7G1.RCVR		RCVR	Binding	n/a		0	0		0
- TO_Q7G1		RCVR	Binding	n/a		0	0		0
- TUNGW.SDR.CHANNEL	ABC	SDR	Binding	n/a		0	0		0
- WAS.JMS.SVRCONN		SVRCONN	Binding	n/a		0	0		0

```
Auto Update      : Off
HostName        : SYS
QmgrName        : Q7G1
```

Channel Status Details

Channel Q7G1.TO.Q7G4 Conn 9.42.46.25(4040)

Channel Type.....	Sender	Message Count.....	
Channel Status.....	Retrying	Bytes Received.....	0
In-Doubt Status.....	Not In-D	Bytes Sent.....	0
CurBatch Messages.....	0	Short Term Compression Time.....	0
CurMsg SeqNo.....	0	Short Term Exit Time.....	0
CurBatch LUW ID.....	CCD489CD	Short Term Net Time.....	0
SeqNo Last Committed.....	0	Short Term XmitQ Time.....	0
LUW Last Committed.....	00000000	Short Term Batch Size.....	0
Last Message Date.....	n/a	Start Date.....	14/03/10
Last Message Time.....	n/a	Start Time.....	03:07:32
Heartbeat Interval.....	300	Long Retries Left.....	976562K
Keep Alive Interval.....	0	Short Retries Left.....	0
User Stop Request.....	Stop Not	Current Action State.....	n/a

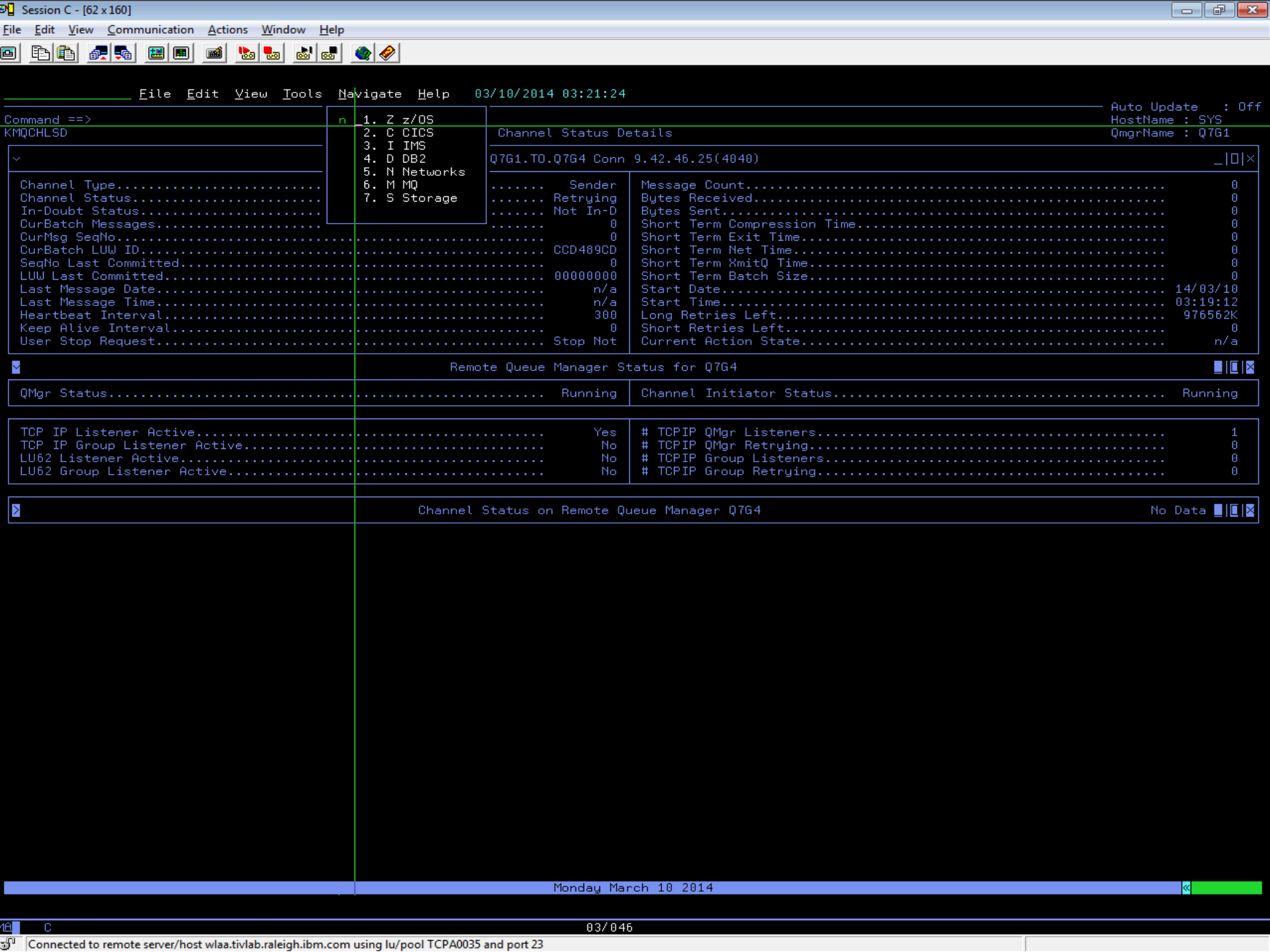
Remote Queue Manager Status for Q7G4

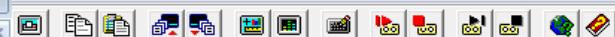
QMGr Status.....	Running	Channel Initiator Status.....	Running
------------------	---------	-------------------------------	---------

TCP IP Listener Active.....	Yes	# TCPIP QMgr Listeners.....	1
TCP IP Group Listener Active.....	No	# TCPIP QMgr Retrying.....	0
LU62 Listener Active.....	No	# TCPIP Group Listeners.....	0
LU62 Group Listener Active.....	No	# TCPIP Group Retrying.....	0

Channel Status on Remote Queue Manager Q7G4

Columns <u>2</u> to <u>9</u> of <u>16</u>								Rows 1 to 1 of 1	
◇Channel Name	Connection Name	Channel Status	Channel Type	In-Doubt Status	CurBatch Messages	CurMsg SeqNo	CurBatch LUW ID	+Last Message Date & Time	
Q7G1.TO.Q7G4		Stopped	Receiver	Not In-Doubt	0	0	0000000000000000	n/a	





=KN3TAPO File Edit View Tools Navigate Help 03/10/2014 03:25:01

 Command ==>
 KN3START

 Auto Update : Off
 Plex ID : SYS
 Sys ID : Q7G1

Enterprise Network Health

Network Health for Applications



Columns 3 to 14 of 21

Rows 1 to 6 of 6

ΔSystem ID	ΔJob Name	Δ% Segs OutOfOrder	ΔTot Segs OutOfOrder	ΔConn in Backlog	Backlog Rejected	ΔTot Backlog Rejected	Δ% Segs Retrans	ΔTot Segs Retrans	ΔIdle Time	ΔConn Count	Active Conns	ΔHighest Conns	ΔTransm Byte R
- SP22	\$22SDSST	0	0	0	0	0	0	1.4K	0.43	46	25	25	0
- SP22	\$22SM2	0	0	0	0	0	0	820	17.70	22	4	4	0
- SYS	\$GGSM2	0	0	0	0	0	0	825	17.70	22	4	4	0
- SYS	M5D0RMTG	0	20	0	0	0	0	1	0.06	64	40	40	1.5K
- SYS	M5D0DSST	0	0	0	0	0	0	15	8.14	17	4	8	0
- SYS	\$GGSDSST	0	0	0	0	0	300	1.4K	17.02	30	9	9	1.3K

Monday March 10 2014

Enterprise Applications Health

```

TCP  STC      : *
SMF  ID       : *

```

```

TCP  STC      : *
SMF  ID       : *

```

Applications Summary

Columns 3 to 14 of 24

Rows 1 to 5 of 127

System ID	Job Name	Idle Time	Conn Count	Active Conns	Highest Conns	Conn in Backlog	Backlog Rejected	Transmit Byte Rate	Receive Byte Rate	% Segs Retrans	Tot Segs Retrans	Tot Backlog Rejected	% Segs OutOfOrder
SYS	ISD0B8IP	0.01	75	52	52	0	0	2.1K	3.9K	0	0	0	0
SYS	M5D0RMT6	0.13	64	40	40	0	0	8.5K	11.8K	0	1	0	0
SP22	L3ITDSW4	0.27	55	34	34	0	0	33.6K	146.6K	0	2	0	0
SP22	\$22SDSST	0.48	46	25	25	0	0	1.1K	0	300	1.4K	0	0
SYS	T5S0DSR3	0.38	45	17	17	0	0	9.2K	34.8K	0	0	0	0

Percent Out of Order Segments OR Total Out of Order Segments

Columns 3 to 13 of 13

Rows 1 to 1 of 1

ΔSystem VID	ΔJob VName	Δ% Segs VOutOfOrder	ΔTot Segs VOutOfOrder	ΔSegments VOutOfOrder	Tot Segs Sent	Tot Segs Received	Total Segments	Segments Sent	Segments Received	Application Type	ΔSysplex VName	TCPIP STC Name
SYS	M5D0RMTG	0	20	0	8.5K	49.4K	58.0K	0	0	Unknown	LPAR400J	TCPIPG

Connections in Backlog OR Total Backlog Connections Rejected

No Data

	Percent Segments Retransmit OR Total Segments Retransmit	Percent Segments Retransmit AND Total Segments Retransmit
0-10%	98.76%	98.76%
11-20%	0.00%	0.00%
21-30%	0.00%	0.00%
31-40%	0.00%	0.00%
41-50%	0.00%	0.00%
51-60%	0.00%	0.00%
61-70%	0.00%	0.00%
71-80%	0.00%	0.00%
81-90%	0.00%	0.00%
91-100%	0.00%	0.00%

Columns 3 to 13 of 13

Rows 1 to 5 of 5

ΔSystem VID	ΔJob VName	Δ% Segs VRetrans	ΔTot Segs VRetrans	ΔSegs VRetrans	Retrans Rate	ΔConn VCount	Active Conns	Accepted Conns	Conn Rate	Application Type	ΔSysplex VName	TCPIP STC Name
— SP22	\$22SDSST	300	1.4K	3	3	46	25	0	0	Unknown	LPAR400J	TCPIP22
— SP22	\$22SM2	0	825	1	1	23	4	0	0	Unknown	LPAR400J	TCPIP22
— SYS	\$GGSM2	0	829	1	1	23	4	0	0	Unknown	LPAR400J	TCPIPG
— SYS	M5D0DSST	0	15	0	0	17	4	0	0	Unknown	LPAR400J	TCPIPG
— SYS	\$GGSDSST	0	1.4K	0	0	29	9	0	0	Unknown	LPAR400J	TCPIPG

Monday March 10 2014

01/002

Connected to remote server/host wlaa.tivlab.raleigh.ibm.com using lu/pool TCPA0035 and port 23

Session C - [62 x 160]

File Edit View Communication Actions Window Help

File Edit View Tools Navigate Help

03/10/2014 03:29:59

Command ==>
KN3TAP0

Options Menu

Select an option and then press ENTER

Columns

1. E Enterprise Network Workspaces

2. L TCP Listeners and Connections

3. S Application Details

Locations Health

ions Summary

Rows32 to79 of127

inog

BacklogRejected

ΔTransmit
Byte Rate

ΔReceive
Byte Rate

% Segs
Retrans

ΔTot Segs
Retrans

Tot Backlog
Rejected

+% Segs
OutOfOrd

-	SYS	SSH06	17.85	2	0	0	0	0	0	0	0	0	0	0
-	SP22	SNMPDE22	17.80	3	0	0	0	0	0	0	0	0	0	0
-	SYS	SNMPDEG	17.80	3	0	0	0	0	0	0	0	0	0	0
-	SP22	RXSERVE	17.80	2	0	0	0	0	0	0	0	0	0	0
-	SP22	RSED	17.80	1	0	0	0	0	0	0	0	0	0	0
-	SYS	RSED	17.80	1	0	0	0	0	0	0	0	0	0	0
-	SP22	Q722CHIN	1.21	1	0	0	0	0	0	0	0	0	0	0
-	SP22	Q721CHIN	17.80	1	0	0	0	0	0	0	0	0	0	0
-	SYS	Q7G4CHIN	0.46	1	0	0	0	0	0	0	0	0	0	0
-	SYS	Q7G1CHIN	4.66	2	1	1	0	0	0	0	1	0	0	0
-	SYS	QID1MD	0.05	18	3	3	0	4.2K	388	0	0	0	0	0
-	SP22	P3SR00V	17.77	7	0	0	0	0	0	0	0	0	0	0
-	SP22	P3SR00V	17.77	8	0	0	0	0	0	0	0	0	0	0
-	SP22	P3DEMNV	17.80	2	0	0	0	0	0	0	0	0	0	0
-	SP22	P3DEMNV	17.80	2	0	0	0	0	0	0	0	0	0	0
-	SP22	OSNMPD22	17.80	2	0	0	0	76.5K	18.1K	0	0	0	0	0
-	SYS	OSNMPDG	17.85	2	0	0	0	1.0K	563	0	0	0	0	0
-	SP22	N3D0AG22	0.31	20	3	3	0	0	0	0	0	0	0	0
-	SYS	N3D0AGGG	0.13	22	4	4	0	0	0	0	0	0	0	0
-	SP22	M540DSST	0.39	29	12	12	0	1.5K	328	0	0	0	0	0
-	SYS	M5D0RMTG	0.13	64	40	40	0	8.5K	11.8K	0	1	0	0	0
-	SYS	M5D0HAHB	0.02	41	20	20	0	28.1K	21.2K	0	0	0	0	0
-	SYS	M5D0DSST	8.19	17	4	8	0	0	0	0	15	0	0	0
-	SP22	L3ITDSW4	0.27	55	34	34	0	33.6K	146.6K	0	2	0	0	0
-	SYS	L3ITDSG4	0.01	42	24	24	0	5.0K	72.6K	0	0	0	0	0
-	SYS	L3IAQIG4	0.52	12	2	2	0	0	0	0	0	0	0	0
-	SP22	L3IAN3W4	0.13	24	3	3	0	29.6K	10.7K	0	0	0	0	0
-	SYS	L3IAN3G4	0.10	19	3	3	0	4.8K	384	0	0	0	0	0
-	SP22	L3IAM2W4	0.54	24	4	4	0	0	0	0	10	0	0	0
-	SYS	L3IAM2G4	0.53	23	4	4	0	0	0	0	10	0	0	0
-	SP22	L3IAMQW4	0.35	19	3	3	0	50.8K	15.9K	0	0	0	0	0
-	SYS	L3IAMQG4	0.02	18	3	3	0	41.0K	186	0	0	0	0	0
-	SP22	L3IAMCW4	0.53	13	2	2	0	0	0	0	0	0	0	0
-	SYS	L3IAMCG4	0.52	12	2	2	0	0	0	0	0	0	0	0
-	SYS	L3IAI5G4	0.18	21	4	4	0	323	863	0	0	0	0	0
-	SYS	L3IAI2G4	0.53	7	1	1	0	0	0	0	0	0	0	0
-	SP22	L3IADFJ4	0.54	12	2	2	0	0	0	0	0	0	0	0
-	SP22	L3IAC5W4	0.13	26	4	4	0	34.7K	7.4K	0	1	0	0	0
-	SYS	L3IAC5G4	0.07	19	3	3	0	4.1K	5.5K	0	0	0	0	0
-	SYS	LOCKD	17.80	1	0	0	0	0	0	0	0	0	0	0
-	SYS	JMON	17.80	1	0	0	0	0	0	0	0	0	0	0
-	SYS	I5D0B8IP	0.01	75	52	52	0	2.1K	3.9K	0	0	0	0	0
-	SYS	IXGLDGR	0.00	1	0	0	0	1.3K	0	0	0	0	0	0
-	SP22	IOBSNMP	0.00	1	0	0	0	0	213.9K	0	0	0	0	0
-	SYS	INETD5	17.80	3	0	0	0	0	0	0	0	0	0	0
-	SP22	INETD4	17.76	4	0	0	0	0	0	0	0	0	0	0
-	SP22	INETD4	17.76	4	0	0	0	0	0	0	0	0	0	0
-	SYS	IMS93ACO	17.80	3	0	0	0	0	0	0	0	0	0	0

Monday March 10 2014

08/017

Connected to remote server/host wlaa.tivlab.raleigh.ibm.com using lu/pool TCPA0035 and port 23



File Edit View Tools Navigate Help 03/10/2014 03:30:16

 Auto Update : Off
 TCP STC : TCPIP
 SMF ID : SYS

 Command ==>
 KN3TCLS

Application TCP Listeners and Connections

Connections Summary for Q7G4CHIN



Columns 3 to 12 of 22



Rows 0 to 0 of 0

Remote IP Address	Local Port	Connection State	% Segs Retrans	Tot Segs Retrans	% Segs OutOfOrder	Tot Segs OutOfOrder	Out Bytes Buffered	In Bytes Buffered	Last Activity	Out Queued Data Time Stamp	In Time

TCP Listeners Summary for Q7G4CHIN



Columns 3 to 13 of 23



Rows 1 to 1 of 1

Local IP Address	Local Port	Conn in Backlog	Backlog Rejected	Tot Backlog Rejected	Idle Time	% Active Conns	Active Conns	Accepted Conns	Highest Conns	Conn Rate	Estab Conns in Backlog	FRC in
::	21432	0	0	0	0.51	0	0	0	0	0	0	

Monday March 10 2014





File Edit View Tools Navigate Help 03/10/2014 03:51:10

 Auto Update : Off
 HostName :
 QmgrName :
Command ==>
KMQSTART
 KMQQACT Issue MQSC command
 Specify the value and then press ENTER
 start listener trptype(tcp) port(4040)

rview

us

|0|X

Columns

Rows 1 to 3 of 3

QMGr VName	Host Name	QMGr VHealth	Queue VHealth	Channel VHealth	Current VEvents	QMGr Status	Channel Initiator	Command Server	Conn #	DLQ Depth	Message # On XMITQ	Total Messages
- Q7G5	SYS	Critical	Unknown	Unknown	0	Stopped	Stopped	Stopped	0	0	0	0
- Q7G1	SYS	Warning	Warning	Critical	0	Running	Running	Waiting	32	0	0	197
- Q7G4	SYS	OK	OK	OK	0	Running	Running	Waiting	39	0	0	8

Queue-Sharing Group Nodes

No Data

Offline WebSphere MQ Monitoring Managed System Nodes

Columns 2 to 5 of 5

Rows 1 to 3 of 3

Managed System	Version	Host Address	Host Info	Managing System
Q722:SP22:MQESA	07.10.00	ip.pipe:#9.42.46.22<NM>SP22</	z/OS~01.12.00	SP22:MQIRA
Q723:SP22:MQESA	07.10.00	ip.pipe:#9.42.46.22<NM>SP22</	z/OS~01.12.00	SP22:MQIRA
SP22:MQIRA	07.10.00	ip.pipe:#9.42.46.22.15857.<NM	z/OS~01.12.00	M5510R22:CMS

Monday March 10 2014



File Edit View Tools Navigate Help 03/10/2014 03:53:08

Auto Update : Off

HostName :

QmgrName :

Command ==>

KMQSTART

WebSphere MQ Health Overview

Queue Manager Status



Columns 2 to 13 of 24

Rows 1 to 3 of 3

QMGr Name	Host Name	QMGr Health	Queue Health	Channel Health	Current QMEvents	QMGr Status	Channel Initiator	Command Server	Conn #	DLQ Depth	Message # On XMITQ	Total Messages
Q7G5	SYS	Critical	Unknown	Unknown	0	Stopped	Stopped	Stopped	0	0	0	0
Q7G1	SYS	OK	OK	OK	0	Running	Running	Waiting	32	0	0	197
Q7G4	SYS	OK	OK	OK	0	Running	Running	Waiting	39	0	0	8

Queue-Sharing Group Nodes

No Data

Offline WebSphere MQ Monitoring Managed System Nodes

Columns 2 to 5 of 5

Rows 1 to 3 of 3

Managed System	Version	Host Address	Host Info	Managing System
Q722:SP22:MQESA	07.10.00	ip.pipe:#9.42.46.22<NM>SP22</	z/OS~01.12.00	SP22:MQIRA
Q723:SP22:MQESA	07.10.00	ip.pipe:#9.42.46.22<NM>SP22</	z/OS~01.12.00	SP22:MQIRA
SP22:MQIRA	07.10.00	ip.pipe:#9.42.46.22.15857.<NM	z/OS~01.12.00	M5510R22:CMS

Monday March 10 2014

Queues

- A queue is a container for messages
 - ▶ Local Queues
 - ▶ Transmission Queues
 - ▶ Remote Queues
 - ▶ Alias Queues
 - ▶ Model Queues
- **Managed by the Queue Manager**
- **Queue Defined**
 - ▶ Predefined
 - ▶ Dynamically defined
- **Messages are placed in queues to allow programs to interact with each other asynchronously**

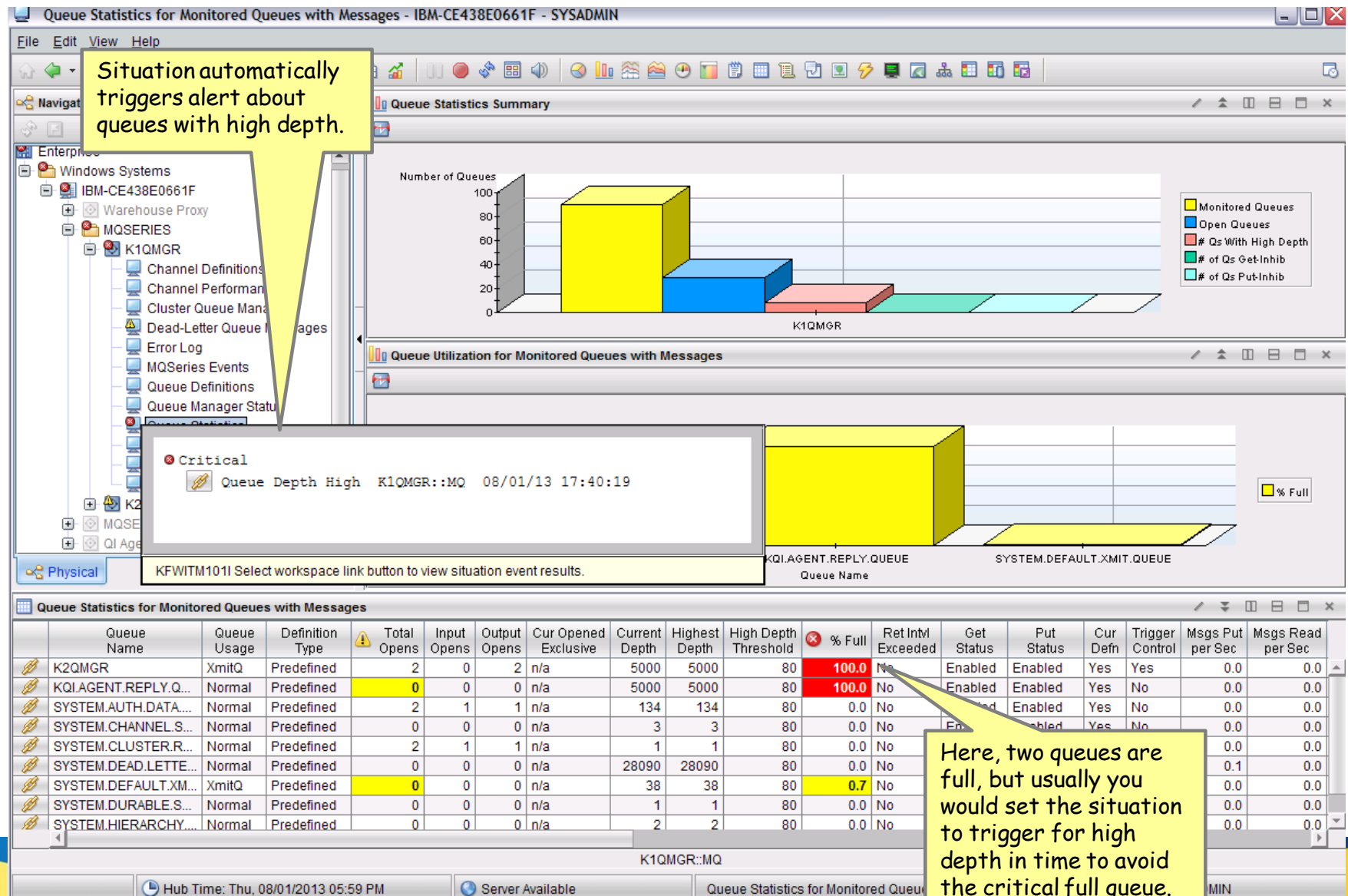
Queue Statistics / Definitions

- **Active, Input and Output Processes**
- **Local Aliased Queue Name and Type**
- **Queue Configuration**
 - ▶ **Trigger Active**
 - ▶ **Trigger Depth**
 - ▶ **Max Message Length**

Queue Full

- **Local Application or MCA can no longer put messages to Queue**
- **Local Application should check for Queue Full condition**
 - ▶ MQRC_Q_FULL (2053, X'805')
- **MCA will put messages to Queue for a Remote Application**
 - ▶ If Queue Full messages go to Dead Letter Queue
 - ▶ If no Dead Letter Queue channel will be stopped
- **MQ Event “Queue Full” or “Queue High” may not be adequate**
 - ▶ These events do not get reset until the Queue Depth hits “Queue Low”
- **Check Queue Depth**
- **Check if messages are on a Queue and no processes have it opened**

Queue Depth High



Check Queue Status

Queue Status - IBM-CE438E0661F - SYSADMIN

File Edit View Help

Navigator View: Physical

- Enterprise
 - Windows Systems
 - IBM-CE438E0661F
 - Warehouse Proxy
 - MQSERIES
 - K1QMGR
 - Channel Definitions
 - Channel Performance
 - Cluster Queue Manager
 - Dead-Letter Queue Messages
 - Error Log
 - MQSeries Events
 - Queue Definitions
 - Queue Manager Status
 - Queue Statistics**
 - Queue Depth High
 - Application Accounting
 - MQI Statistics
 - Publish Subscribe
 - K2QMGR

Physical

Number of Messages

K2QMGR

Current Depth

Queue Status

Queue Name	Current Depth	Input Opens	Output Opens	Oldest Msg Age	Last Put Date & Time
K2QMGR	5000	0	2	114364	07/22/13 06:54:09

There are some really old messages on this queue.

Oldest Message Age

K2QMGR

Oldest Msg Age

Number of Opens

K2QMGR

Input Opens
Output Opens

Open Handles for Queue

Application Tag	Appl Type	Open for Input	Open for Output	Open for Browse	Open for Inquire	Open for Set	Asynch State	User ID	ASID	Process ID	Thread ID	Channel Name	Connection Name	Handle Status	External Un Recovery T
I7.0\bin\DataFlowEngine.exe	USER	No	Yes	No	No	No	None	SYSTEM@NT AUTHORITY		6748	2			Inactive	QMGR
I7.0\bin\DataFlowEngine.exe	USER	No	Yes	No	No	No	None	SYSTEM@NT AUTHORITY		6744	2			Inactive	QMGR

Note how two applications have it open for output, but none for input.

So alternatively, a situation could have automatically detected that the queue is not open for input though it has a depth > 0.

Since this is an Xmit queue, the channel should have it open for input.

Queue: K2QMGR QMgr: K1QMGR Host: IBM-CE438E0661F

Hub Time: Thu, 08/01/2013 06:10 PM Server Available Queue Status - IBM-CE438E0661F - SYSADMIN

Combine z/OS and MQ information to solve Queue Full

File Edit View Tools Navigate Help 07/24/2014 23:57:41

Command ==> KMQQMSTS

Auto Update : Off
HostName : SP22
QmgrName : Q721

Current Queue Manager Status

Status Parameters

Queue Manager Health

QMgr Name.....	Q721	Host Name.....	SP22
QMgr Health.....	Warning	Connection Count.....	55
QMgr Status.....	Running	Channel Initiator Status.....	Running
Command Server Status.....	Waiting	Current MQEvents.....	0

Queue Health

Queue Health.....	Critical	DLQ Depth.....	0
High Depth Queue Count.....	1	Put Inhibited Queue Count.....	0
Total XMIT Queue Messages.....	0	Get Inhibited Queue Count.....	0
Total Messages.....	158560	Open Queue Count.....	36

Channel Health

Channel Health.....	OK	Indoubt Connections.....	0
Current Not Running.....	0	Server Connections.....	0
Current Connections.....	0	% Max Channels.....	0.0
Active Connections.....	0	% Max Active Channels.....	0.0

Log Datasets

Oldest Active UOW Log Dataset Name.....	MQM.V701
Page Set Recovery Log Dataset Name.....	MQM.V701
Active Log Copy 1 Dataset Name.....	MQM.V701
Active Log Copy 2 Dataset Name.....	MQM.V701

Thursday July 24 2014



File Edit View Tools Navigate Help 03/10/2014 02:59:14

Auto Update : Off

HostName :

QmgrName :

Command ==>

KMQSTART

WebSphere MQ Health Overview

Queue Manager Status



Columns 2 to 13 of 24

Rows 1 to 3 of 3

QMGr Name	Host Name	QMGr Health	Queue Health	Channel Health	Current QMEvents	QMGr Status	Channel Initiator	Command Server	Conn #	DLQ Depth	Message # On XMITQ	Total Messages
Q7G5	SYS	Critical	Unknown	Unknown	0	Stopped	Stopped	Stopped	0	0	0	0
Q7G1	SYS	Warning	Warning	Critical	0	Running	Running	Waiting	32	0	0	197
Q7G4	SYS	OK	OK	OK	0	Running	Running	Waiting	0	0	0	0

Queue-Sharing Group Nodes

No Data

Offline WebSphere MQ Monitoring Managed System Nodes



Columns 2 to 5 of 5

Rows 1 to 3 of 3

Managed System	Version	Host Address	Host Info	Managing System
Q722:SP22:MQESA	07.10.00	ip.pipe:#9.42.46.22<NM>SP22</	z/OS~01.12.00	SP22:MQIRA
Q723:SP22:MQESA	07.10.00	ip.pipe:#9.42.46.22<NM>SP22</	z/OS~01.12.00	SP22:MQIRA
SP22:MQIRA	07.10.00	ip.pipe:#9.42.46.22.15857.<NM	z/OS~01.12.00	M5510R22:CMS

Monday March 10 2014

Command ==>

KMQUEUEHS

Queue High Depth Summary

Queues with High Depth

Columns 2 to 9 of 9

Rows 1 to 1 of 1

ΔQueue ▽Name	ΔCurrent ▽Depth	Input Opens	Output Opens	Get Status	Put Status	Trigger Control	% Full	High Depth Threshold %
P6.IN.Q1	912	1	1	Enabled	Enabled	Off	91.2	80.0

Queues with Depth > 0

Columns 2 to 9 of 9

Rows 1 to 15 of 15

ΔQueue ▽Name	ΔCurrent ▽Depth	Input Opens	Output Opens	Get Status	Put Status	Trigger Control	% Full	High Depth Threshold %
ABCQ	157572	0	0	Enabled	Enabled	Off	0.0	80.0
P6.IN.Q1	912	1	1	Enabled	Enabled	Off	91.2	80.0
TUNGW.QUEUE	40	0	0	Enabled	Enabled	Off	66.6	80.0
ITML3TEST003	26	0	0	Enabled	Enabled	Off	0.0	80.0
ITML3TEST009	14	0	0	Enabled	Enabled	Off	46.6	80.0
SYSTEM.CHANNEL.SYNCQ	11	0	0	Enabled	Enabled	Off	0.0	80.0
ITML3TEST001	10	0	0	Enabled	Enabled	Off	33.3	80.0
javascript	7	0	0	Enabled	Enabled	Off	70.0	80.0
Q4QM7501	7	0	0	Enabled	Enabled	Off	0.0	80.0
SYSTEM.CLUSTER.REPOS	6	1	1	Enabled	Enabled	Off	0.0	80.0
ITML3TEST007	6	0	0	Enabled	Enabled	Off	20.0	80.0
ITML3TEST004	3	0	0	Enabled	Enabled	Off	10.0	80.0
SYSTEM.HIERARCHY.STA	2	0	0	Enabled	Enabled	Off	0.0	80.0
SYSTEM.DURABLE.SUBSC	2	0	0	Enabled	Enabled	Off	0.0	80.0
SYSTEM.RETAINED.PUB.	1	0	0	Enabled	Enabled	Off	0.0	80.0

Command ==>

KMQUEUE

Queue Status Details

Status

Statistics

Parameters

Queue P6.IN.Q1

Current Depth.....	1148	Queue Monitoring.....	Medium
Uncommitted Msgs.....	No	Short Term Queue Time.....	976562K
Output Opens.....	1	Long Term Queue Time.....	976562K
Input Opens.....	1	Oldest Msg Age.....	1307
Last Put Date.....	14/07/25	Last Get Date.....	14/07/25
Last Put Time.....	00:07:15	Last Get Time.....	00:06:04

Queue Usage.....	Normal	Definition Type.....	Predefin
% Full.....	0.0	Max Depth.....	9999999
Get Status.....	Enabled	Trigger Control.....	Off
Put Status.....	Enabled	Trigger Type.....	First
Default Persist.....	No	Trigger Priority.....	0
Default Priority.....	0	Trigger Depth.....	1
Creation Date.....	14/07/24	Alter Date.....	14/07/25
Creation Time.....	23:30:01	Alter Time.....	00:02:08

Applications with Open Handle for Queue

Columns 2 to 12 of 20

Rows 1 to 2 of 2

ΔAppl ▽Tag	ΔAppl ▽Type	ΔASID ▽	ΔUser ▽ID	Open for Input	Open for Output	Open for Browse	Open for Inquire	Open for Set	Channel Name	Connection Name	+CICS Regio
- A6INP	BATCH	0047	DONGCC	No	Yes	No	No	No			
- A6OUP	BATCH	003F	DONGCC	Exclusive	No	Yes	No	No			

Command ==>
KMQAPQZD

z/OS Application Details for Queue

Queue P6.IN.Q1 Appl A60UP

Columns 2 to 13 of 15

Rows 1 to 1 of 1

Appl Tag	User ID	Handle Status	Asynch State	Open for Input	Open for Output	Open for Browse	Open for Inquire	Open for Set	QSG Disp	External Unit of Recovery Type	External Unit of Recovery ID	+QMg Rec
A60UP	DONGCC	Active	None	Exclusive	No	Yes	No	No	Qmgr	QMGR		

z/OS Address Space CPU Details for A60UP 0x003F

Job Name.....	A60UP
ASID.....	003F
Type.....	Batch
JESJOBID.....	JOB12118
Step Name.....	CSQ4BCJ
Proc Step.....	
IO per Second.....	0.0
CPU Percent.....	96.1
IFA Percent.....	0.0
SRB Percent.....	0.0
TCB Percent.....	96.1
ZIIP Percent.....	0.0
CPU Percent Excluding Home SRB Time.....	96.1
IFA Percent With Enclave Home SRB Time.....	0.0
ZIIP Percent With Enclave Home SRB Time.....	0.0
IFA on CP Percent.....	0.0
ZIIP on CP Percent.....	0.0
IFA Percent With Enclave Home SRB Time.....	0.0
ZIIP Percent With Enclave Home SRB Time.....	0.0
Job CPU Percent.....	87.7
Job SRB Percent.....	0.0
Job TCB Percent.....	87.7
Job CPU Time.....	88.76
Job SRB Time.....	0.00
Job TCB Time.....	88.76
Job Preemptable Home SRB Service Time.....	0.00
Job Preemptable Home SRB Service Percent.....	0.0
Job Additional SRB Service Time.....	0.00
Job Additional SRB Service Percent.....	0.0

Command ==>
KMQAPQZD

KM5MQASZ Navigation Options for Address Space A60UP 0x003F

ils for Queue

Select an action and then press ENTER

ppl A60UP

_ | 0 | x

Columns

1. ! Take Action on Address Space

Rows 1 to 1 of 1

2. C - Cancel Address Space

3. A Address Space Bottlenecks Summary

4. B Bottleneck Analysis for Address Space

5. D Storage Usage by Address Space

6. M Storage Usage by all Address Spaces

7. S Address Space CPU Usage Details

8. T TCB Storage and LSQA for Address Space

9. W WLM Service Class Resources

for e	Open for Inquire	Open for Set	QSG Disp	External Unit of Recovery Type	External Unit of Recovery ID	+QMg Rec
	No	No	Qmgr	QMGR		

ils for A60UP 0x003F

_ | 0 | x

Job Name.	A60UP
ASID.....	003F
Type.....	Batch
JESJOBID.....	JOB12118
Step Name.....	CSQ4BCJ
Proc Step.....	
IO per Second.....	0.0
CPU Percent.....	96.1
IFA Percent.....	0.0
SRB Percent.....	0.0
TCB Percent.....	96.1
zIIP Percent.....	0.0
CPU Percent Excluding Home SRB Time.....	96.1
IFA Percent With Enclave Home SRB Time.....	0.0
zIIP Percent With Enclave Home SRB Time.....	0.0
IFA on CP Percent.....	0.0
zIIP on CP Percent.....	0.0
IFA Percent With Enclave Home SRB Time.....	0.0
zIIP Percent With Enclave Home SRB Time.....	0.0
Job CPU Percent.....	87.7
Job SRB Percent.....	0.0
Job TCB Percent.....	87.7
Job CPU Time.....	88.76
Job SRB Time.....	0.00
Job TCB Time.....	88.76
Job Preemptable Home SRB Service Time.....	0.00
Job Preemptable Home SRB Service Percent.....	0.0
Job Additional SRB Service Time.....	0.00
Job Additional SRB Service Percent.....	0.0





Command ==>
KM5B0TA2

Bottleneck Analysis

Address Space A60UP Summary

Columns 3 to 4 of 4

Rows 1 to 4 of 4

Attribute	Percent	0...20...40...60...80...100	Resource
Using CPU	16.8		
CPU Loop Index	17.7		
ECB Wait	6.5		
CPU Wait	4.9		

Contention(%) by Resource

Step Name.....	CSQ4BCJ	Using CPU.....	88.5
Proc Step.....		Using IFA.....	0.0
Service Class.....	BATCH	Using zIIP.....	0.0
CPU Wait.....	4.9	CPU Loop Index.....	17.7
ECB Wait.....	6.5	Resource Group Capping.....	0.0
IFA Wait.....	0.0	Active I/O.....	0.0
VIO Wait.....	0.0	Queued I/O.....	0.0
zIIP Wait.....	0.0	Tape Mount.....	0.0
Stimer Wait.....	0.0	Shared Pages.....	0.0
Enqueue Wait.....	0.0	Server Swap-In.....	0.0
MVS Lock Wait.....	0.0	Common Page-In.....	0.0
Stimer ECB Wait.....	0.0	Private Page-In.....	0.0
Server Paging.....	0.0	Hiperspace Page-In.....	0.0
Server MPL Delay.....	0.0	Cross Memory Page-In.....	0.0

Contention(%) by Resource -- (JES,HSM,SWAP & CRYPTO)

JES2 Job Cancel.....	0.0	JES2 Job Delete.....	0.0
JES2 Job Status.....	0.0	JES2 SYSOUT.....	0.0
JES2 Job Requeue.....	0.0	HSM Backup.....	0.0
HSM JES3 C/I Locate.....	0.0	HSM Delete.....	0.0
HSM TSO CLIST.....	0.0	HSM Migrate.....	0.0
HSM Recall.....	0.0	HSM CDS Read.....	0.0
HSM Recover.....	0.0	SWAP APPC.....	0.0
SWAP Aux Stor.....	0.0	SWAP Central Stor.....	0.0
SWAP Detected.....	0.0	SWAP Enq Exchange.....	0.0
SWAP Exchange.....	0.0	SWAP Long.....	0.0
SWAP Out Too Long.....	0.0	SWAP MPL Delay.....	0.0
SWAP Request.....	0.0	SWAP Real Stor.....	0.0
SWAP Sys Paging.....	0.0	SWAP Page-Ins.....	0.0
SWAP Terminal In.....	0.0	SWAP Terminal Out.....	0.0
SWAP Transition.....	0.0	SWAP Unilateral.....	0.0
SWAP OMVS Input.....	0.0	SWAP OMVS Output.....	0.0
SWAP In-Real.....	0.0	Using Crypto Async Msg Proc.....	0.0
Crypto Async Msg Proc Wait.....	0.0	Using Crypto Assist Proc.....	0.0
Crypto Assist Proc Wait.....	0.0	WTOR Wait.....	0.0

Command ==>
KM5INSS

Inspect: CPU Usage for A60UP 0x003F

Sampling Statistics

Columns 3 to 4 of 4



Rows 1 to 1 of 1

◊Samples	◊Interval	Samples Taken	Samples Used
1000	2	1000	1000

CPU Usage for A60UP 0x003F

Columns 1 to 11 of 19

Rows 1 to 5 of 5

Load Module Name	TCB Address	Load Module Address	Load Module CPU % of Job	0..20..40..60..80..100	CSECT Name	CSECT Address	Offset in CSECT	CPU % of CSECT	0..20..40..60..80..100	+Initial Program
CSQ4BCJC	007F8030	24C00000	100.0		CSQ4BCJ1	24C00000	00000E10 00000E00 00000E20 00000E30 00000DF0	69.7 18.7 10.1 1.2 0.1		CSQ4BCJ

Messages

Columns 1 to 1 of 1

Rows 1 to 1 of 1

◊Message

KM3IN000I GRANULARITY SET TO 0X00000010

Issues with DLQ

- Are there any messages in the DLQ?
- How long has a message been in the DLQ?
- What messages are in the DLQ?
- Why is a message in the DLQ?
- Can I view the message?
- Can I delete one or more messages?
- Can I requeue a message?

Messages in the Dead Letter Queue

- **Dead Letter Queue prevents the Queue Manager from stopping the channel**
- **Need to monitor if messages arrive in the Dead Letter Queue**
- **Need to quickly isolate the cause of the message(s) arriving in the DLQ**
- **Need to be able to resolve the issue with the DLQ messages**
 - ▶ Fix the issue
 - ▶ Delete the message(s)
 - ▶ Retry the messages

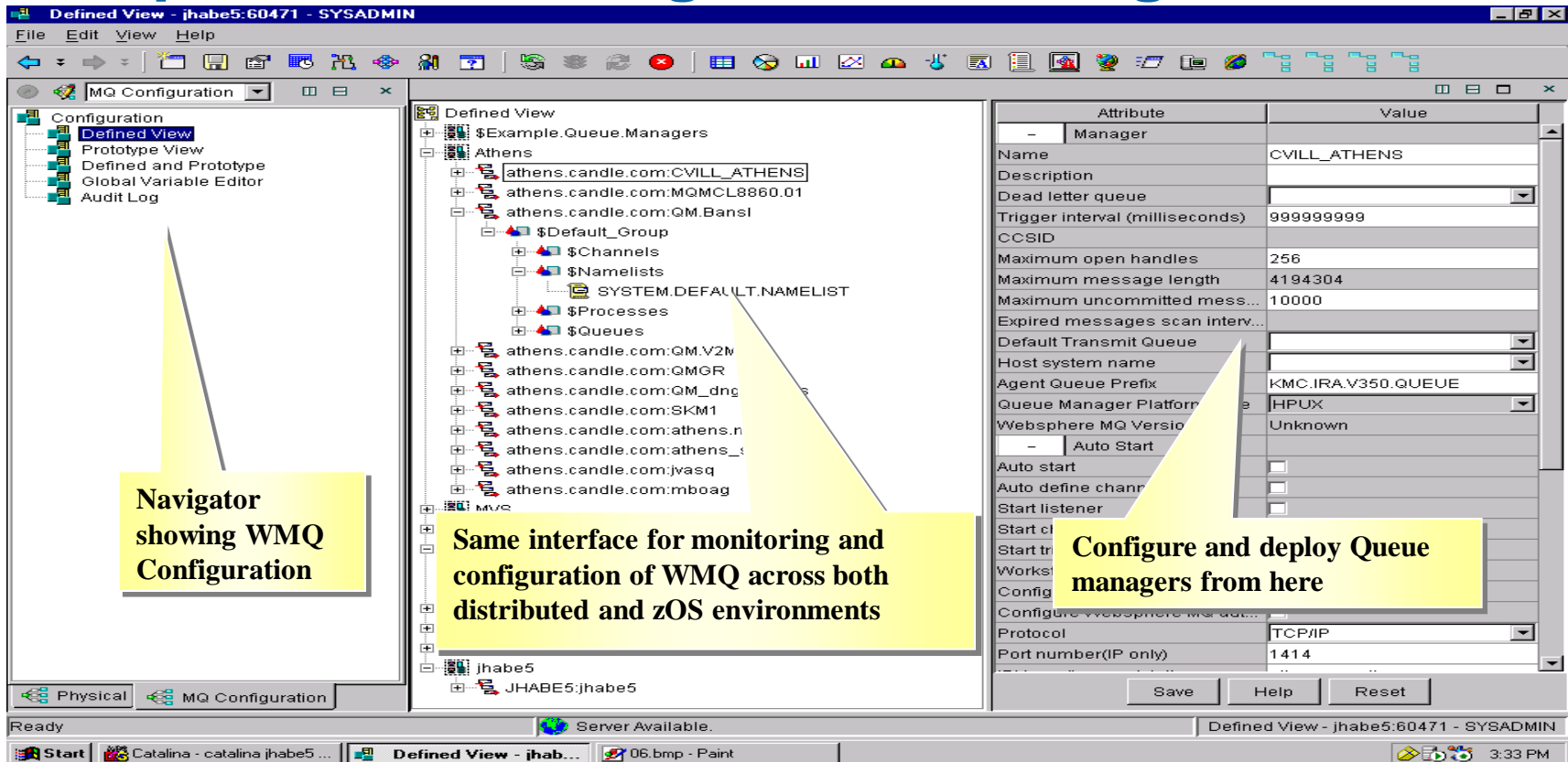
MQ problems between IBM z/OS® and distributed systems

- MQ provides common API across all platforms
- Different monitoring/management solutions for each platform?
- Best practices dictate looking at MQ environment holistically
- Differing backup & recover strategies for MQ objects

MQ Configuration - Administration

- Enterprise-wide configuration/administration strategy?
- Different strategies depending on platform?
- What about backup/recovery?
- If an object is modified you need to be able to detect that.

WebSphere MQ Configuration Management



- Discovery of existing MQ resources
- Prototyping/Modeling (templates) of configuration
- Validation prior to deployment
- Deployment of template based configuration to multiple nodes, immediate or scheduled
- Synchronization from actual to defined or defined to actual
- Audit trail
- Identify WMQ configuration discrepancies
- Recovery of WebSphere MQ Environments

WebSphere Message Broker (IIB)

- **More of a Black Box than MQ**
 - ▶ Execution Groups
 - ▶ Message Flows
 - ▶ Processing Nodes
 - ▶ Threads
- **Need to understand if MB is being affected by MQ**
- **Is the Queue Manager running?**
- **Is the Broker connected to the Queue Manager?**
- **Are the issues with the Network?**
- **Are there issues with the OS?**
- **Demands a holistic approach to monitoring to improve MTTR**

Message Broker Performance & Availability Monitoring

The screenshot displays the IBM Tivoli Monitoring interface for Message Broker (MQ) performance and availability. The main window is titled "QI_Broker_QMgr_Not_Connected - TIVQ60 - SYSADMIN". It features a "View: Physical" pane on the left showing a tree structure of components, including "MQSERIES - QA", "QI Agent", "Components", "Product Events", "QI Broker", "BK60", "Broker", "Mes", "Broker Statistics", "Execution Group Statistics", "Message Flow Statistics", "Sub-Flow Statistics", "CandleMonitor Node Statistics", "Archive Message Flow Accounting", "Snapshot Message Flow Accounting", "Publish-Subscribe Statistics", "Execution Group Information", "Message Flow Information", "Message Processing Node Information", "Neighbors", "Subscriptions", "Retained Publications", and "ACL Entries". A yellow callout box labeled "WMB Reports" points to the "Broker Statistics" and "Execution Group Statistics" items. Another yellow callout box labeled "Navigator with WMB monitor" points to the "QI Broker" and "BK60" items. The main pane shows "Initial Situation Values" and "Current Situation Values" tables. Both tables have columns for "QMGr Connect Status", "Origin Node", "Broker (Deprecated)", "Broker Status", "Execution Groups", "Queue Manager", and "Trusted QMgr". The "QMGr Connect Status" is "NotConnected" and the "Broker Status" is "Stopped". A yellow callout box labeled "Same interface, monitoring paradigms for managing both WMQ and WMB across both distributed and zOS environments" points to the "Current Situation Values" table. The bottom pane shows "Command View" with "Take Action" and "Destination Systems" sections. The status bar at the bottom indicates "Hub Time: Wed, 03/26/2008 11:30 AM" and "Server Available".

WMB Reports

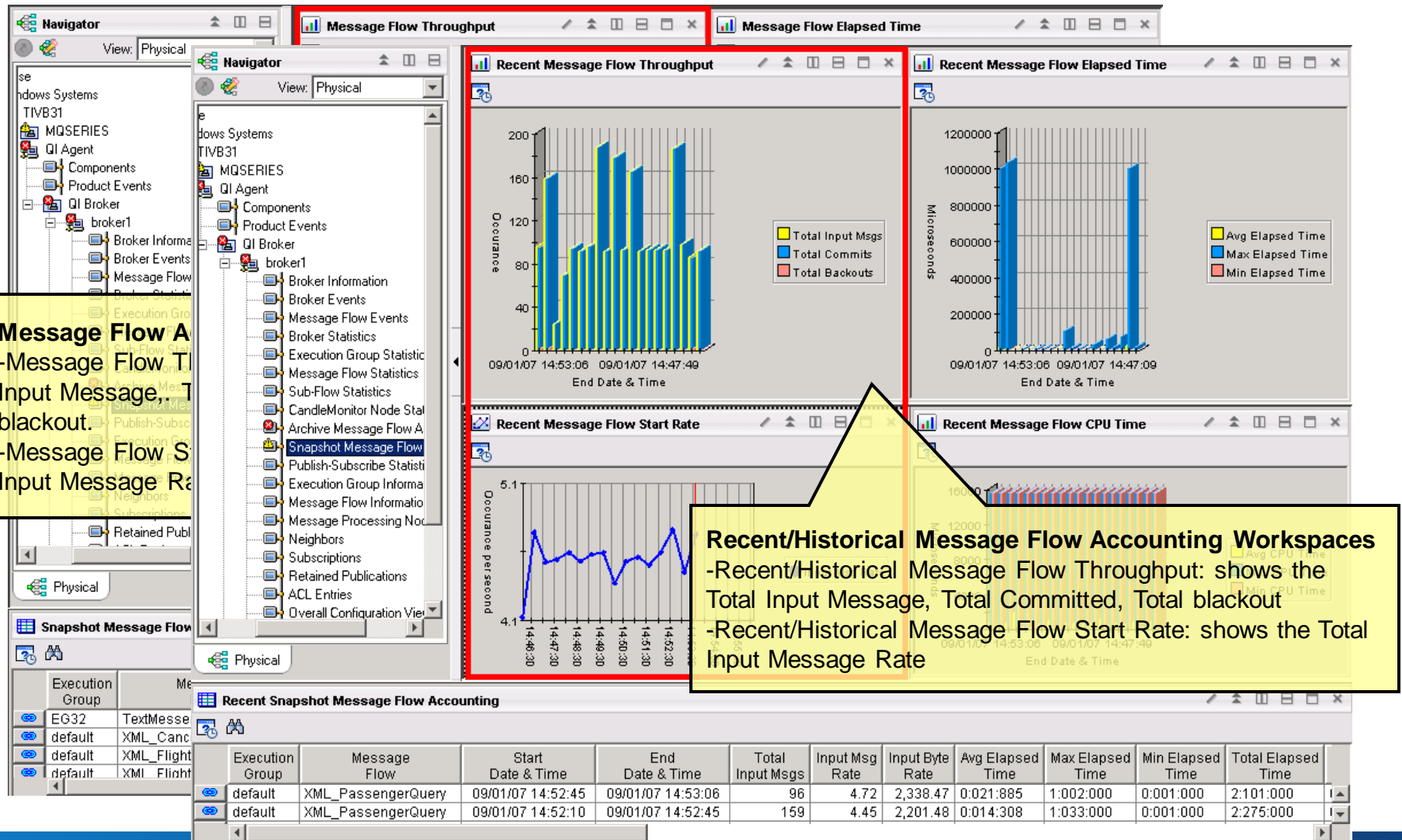
Navigator with WMB monitor

Same interface, monitoring paradigms for managing both WMQ and WMB across both distributed and zOS environments

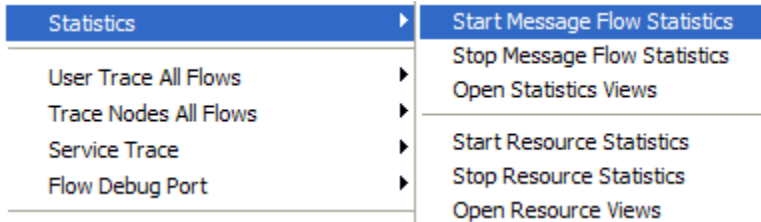
- Monitor message broker / message flow events
- Provide performance statistics at broker, execution group, message flow, sub-flow and processing node levels
- Report pub/sub neighbors, subscriptions, retained publications and ACL entries in broker
- Detect broker configuration changes

- Message broker operational command access
- Detect Broker Status - stopped broker, problems connecting to broker's queue mgr, stopped message flow, an active trace, expired publications or subscriptions
- Track Broker performance – message flow time, queue time, input/output rates

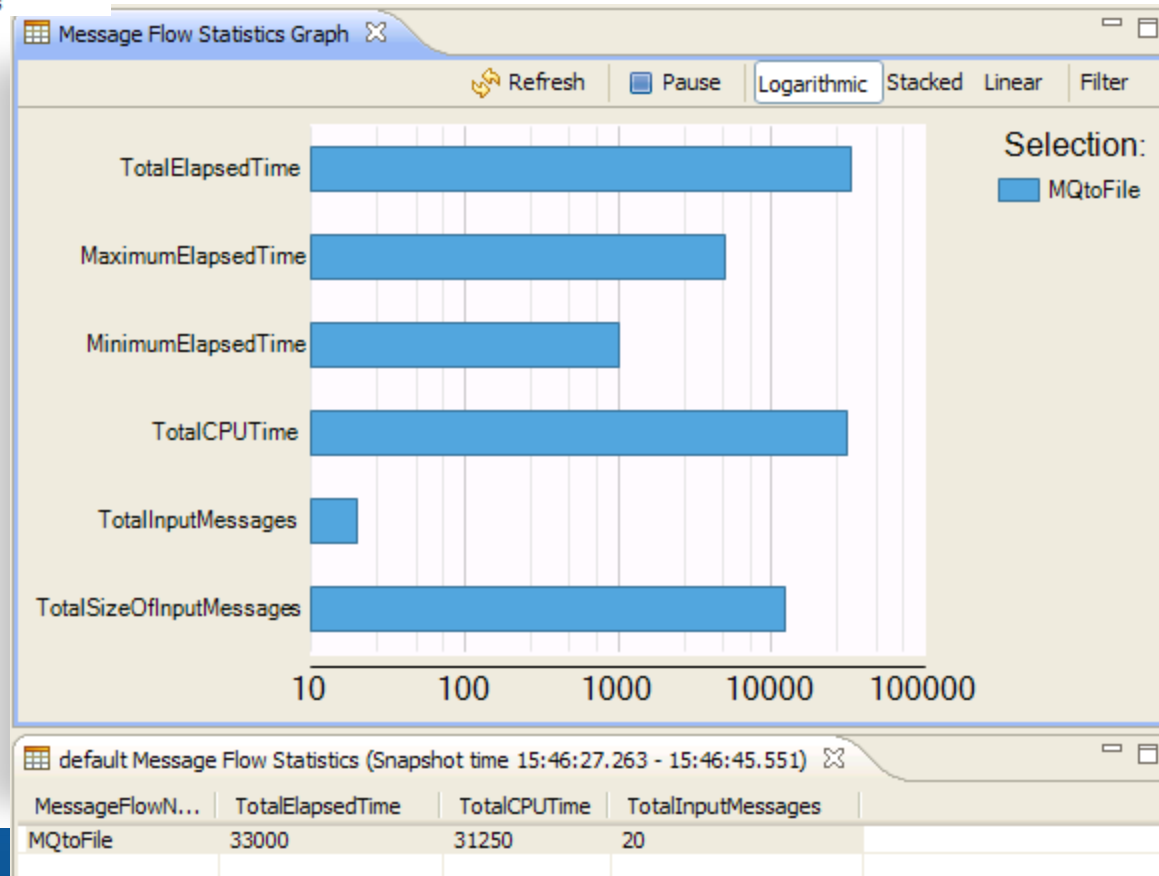
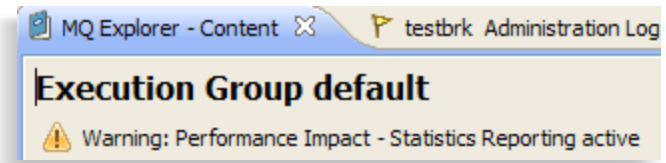
Message Flow Workspaces



Broker Explorer & Message Flow Statistics



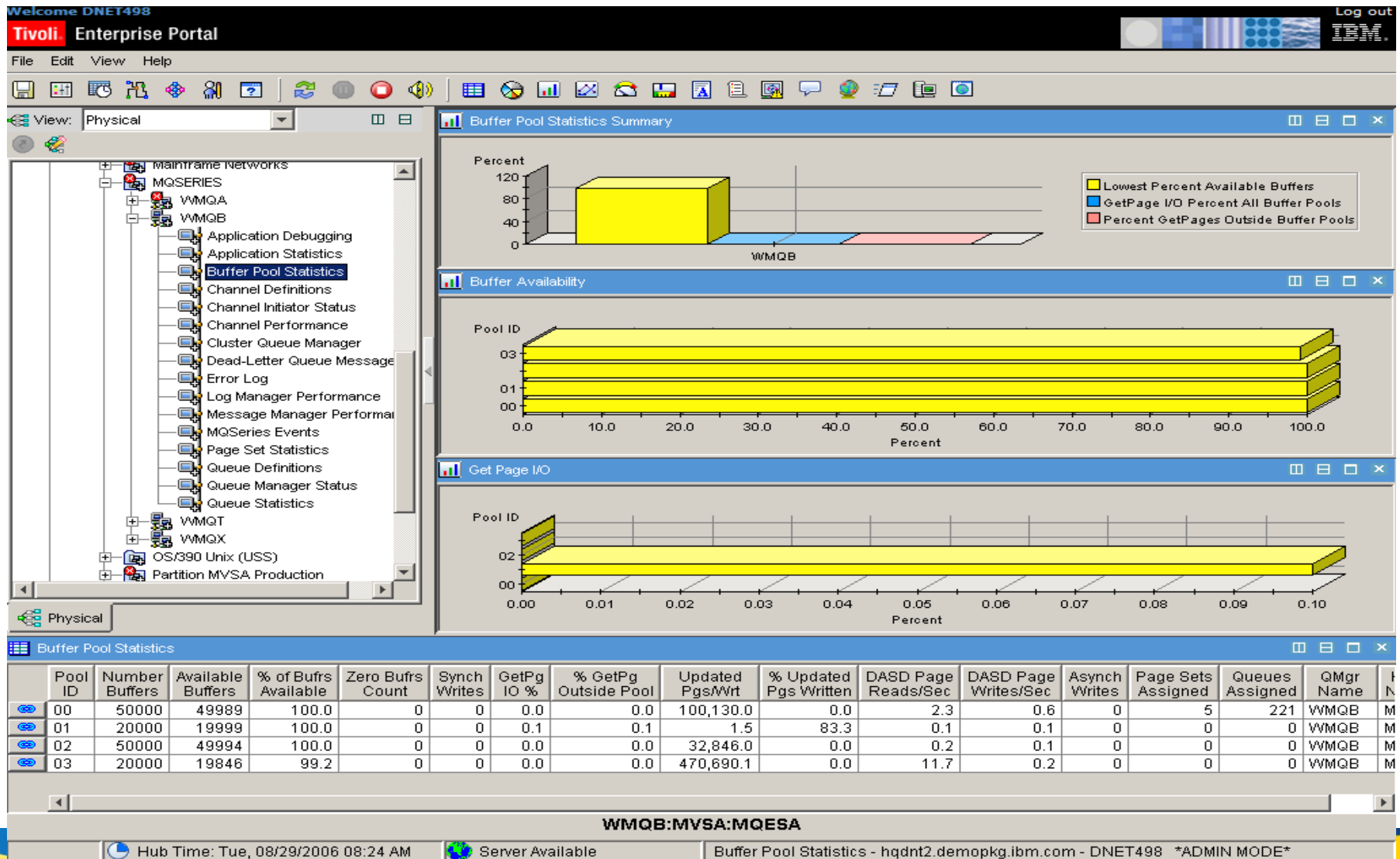
- The Message Broker Explorer enables you to start/stop message flow statistics on the broker, and view the output.
- New in V7 (although supportpac IS02 available for V6.1)
- Warnings are displayed advising there may be a performance impact (typically ~3%)



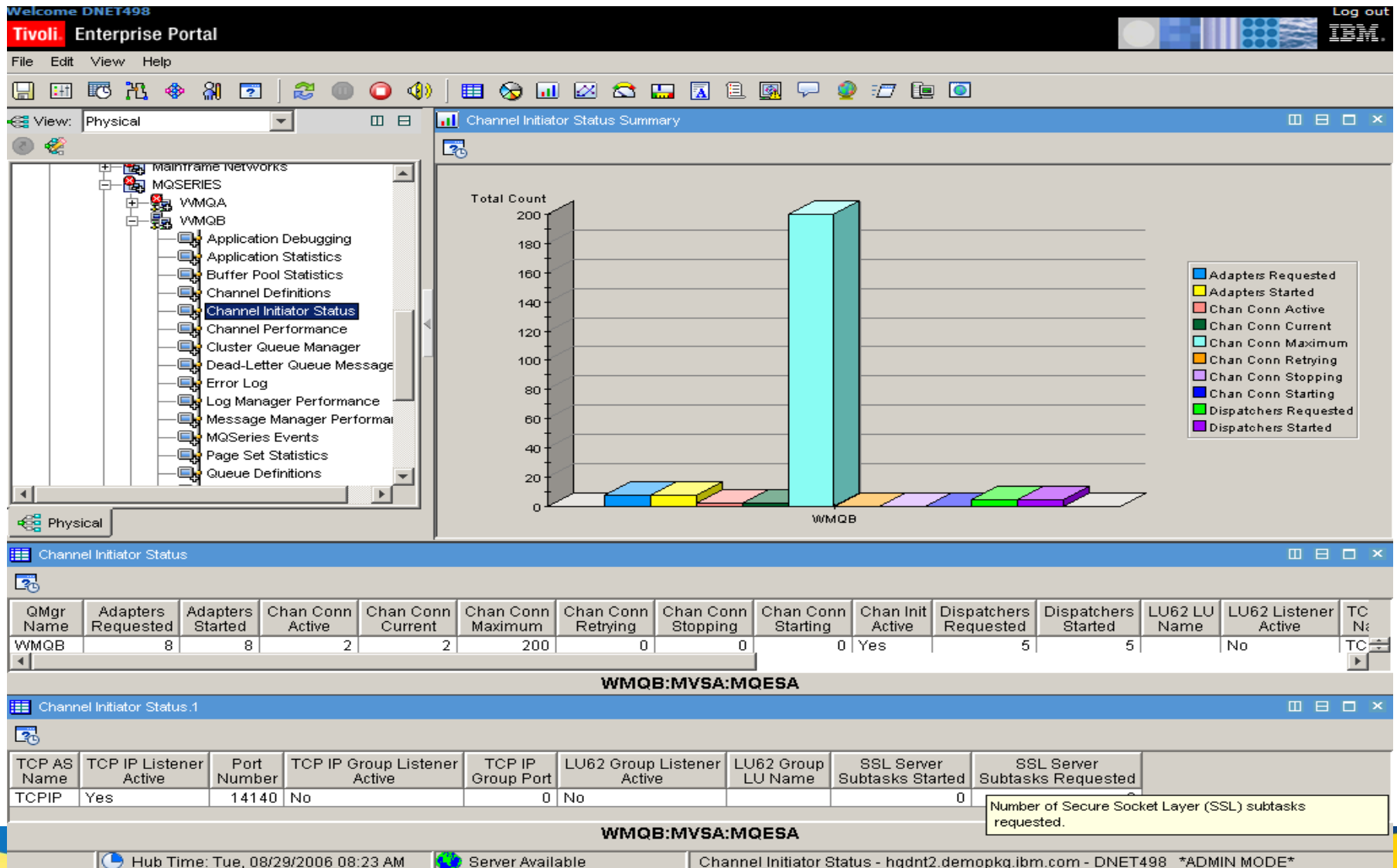
What else?

- Logs (different for z/OS and Distributed)
- Buffer Pools (z/OS)
- Page Sets (z/OS)
- Shared Queues/Coupling Facility (z/OS)
- Clusters
- Age of Messages
- Queue/Dequeue Rate
- Channel Usage
- Poison Messages
- What's normal activity?
- Predictive Analysis

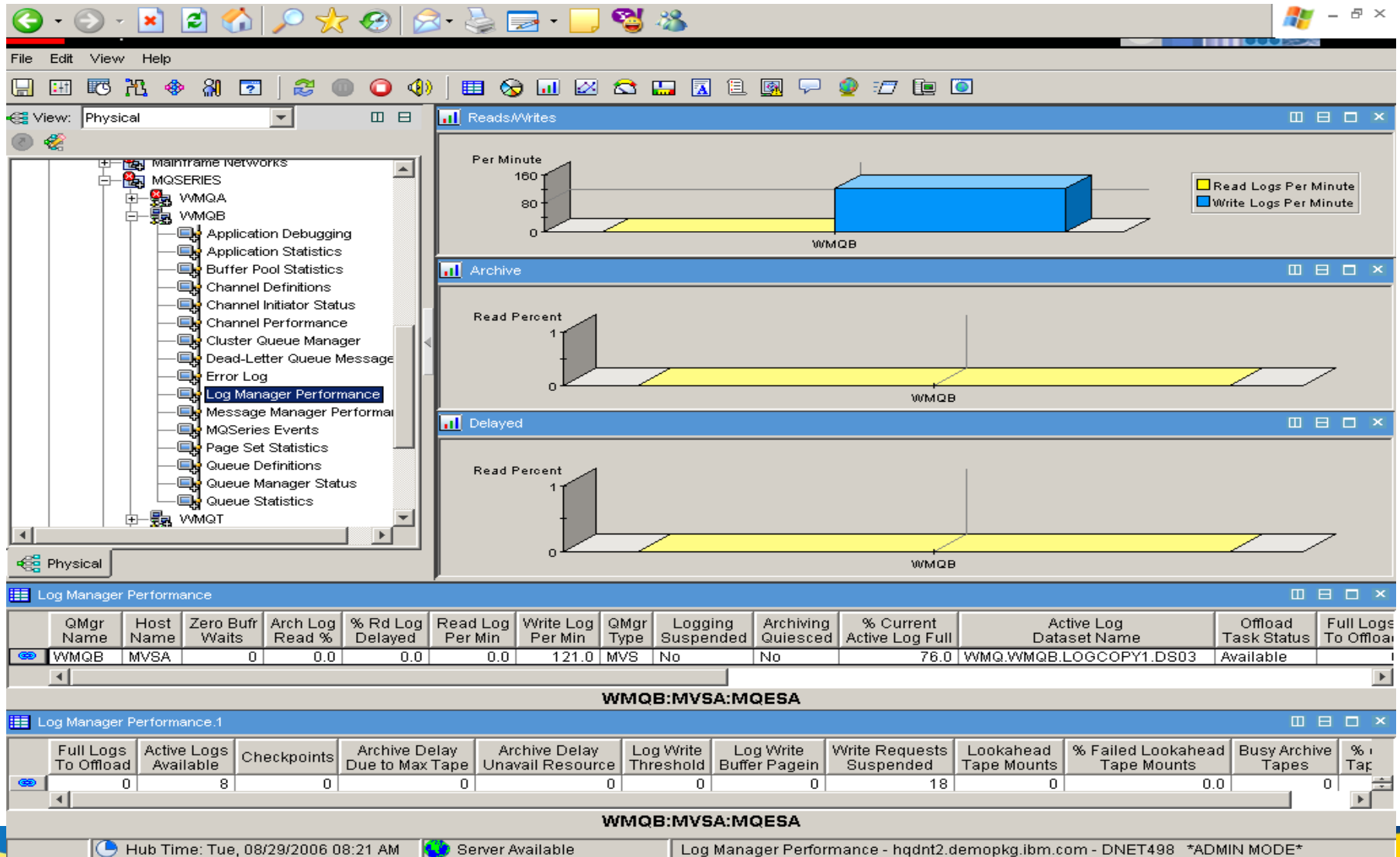
Buffer Pool Statistics - zOS



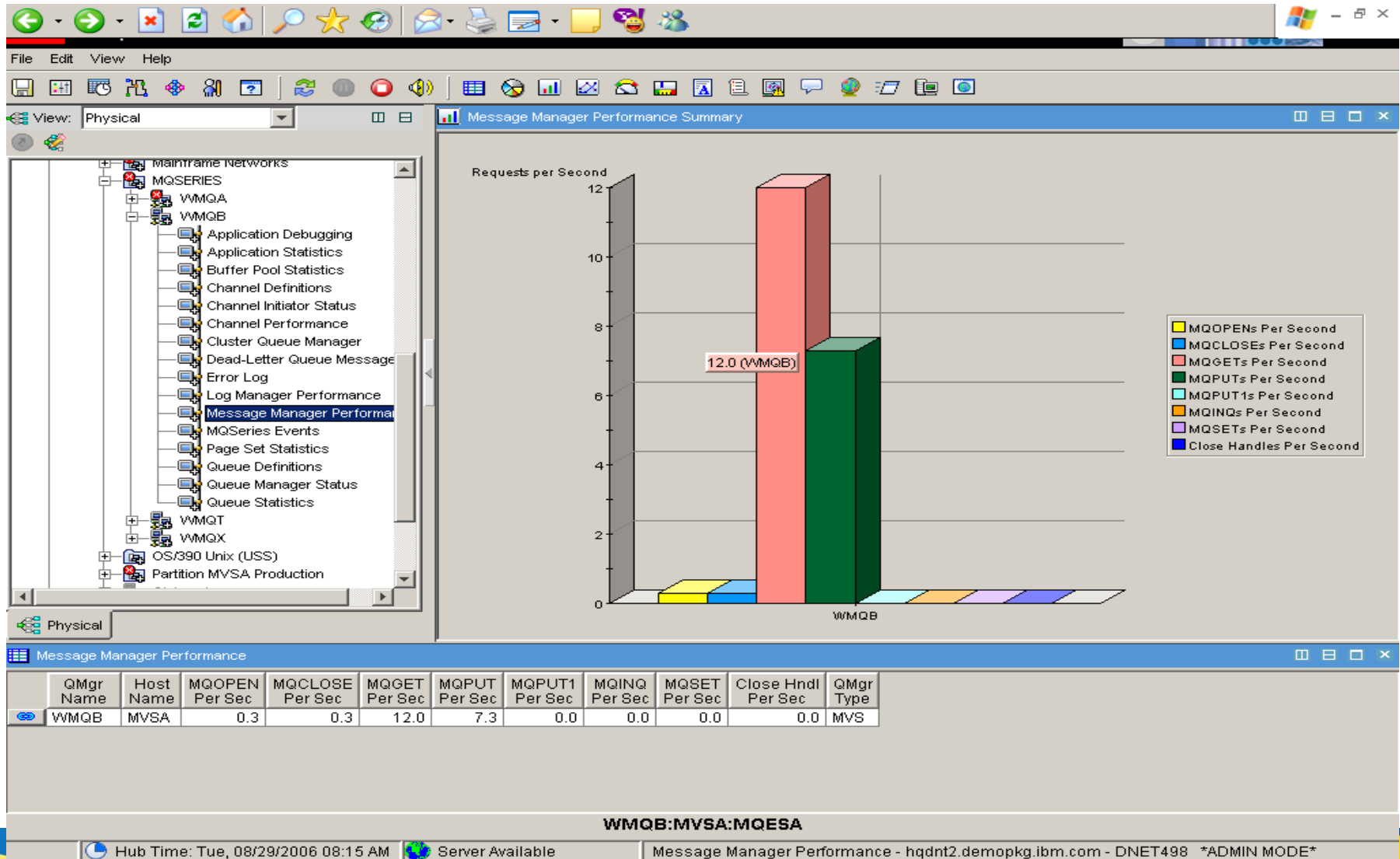
Channel Initiator Status - zOS



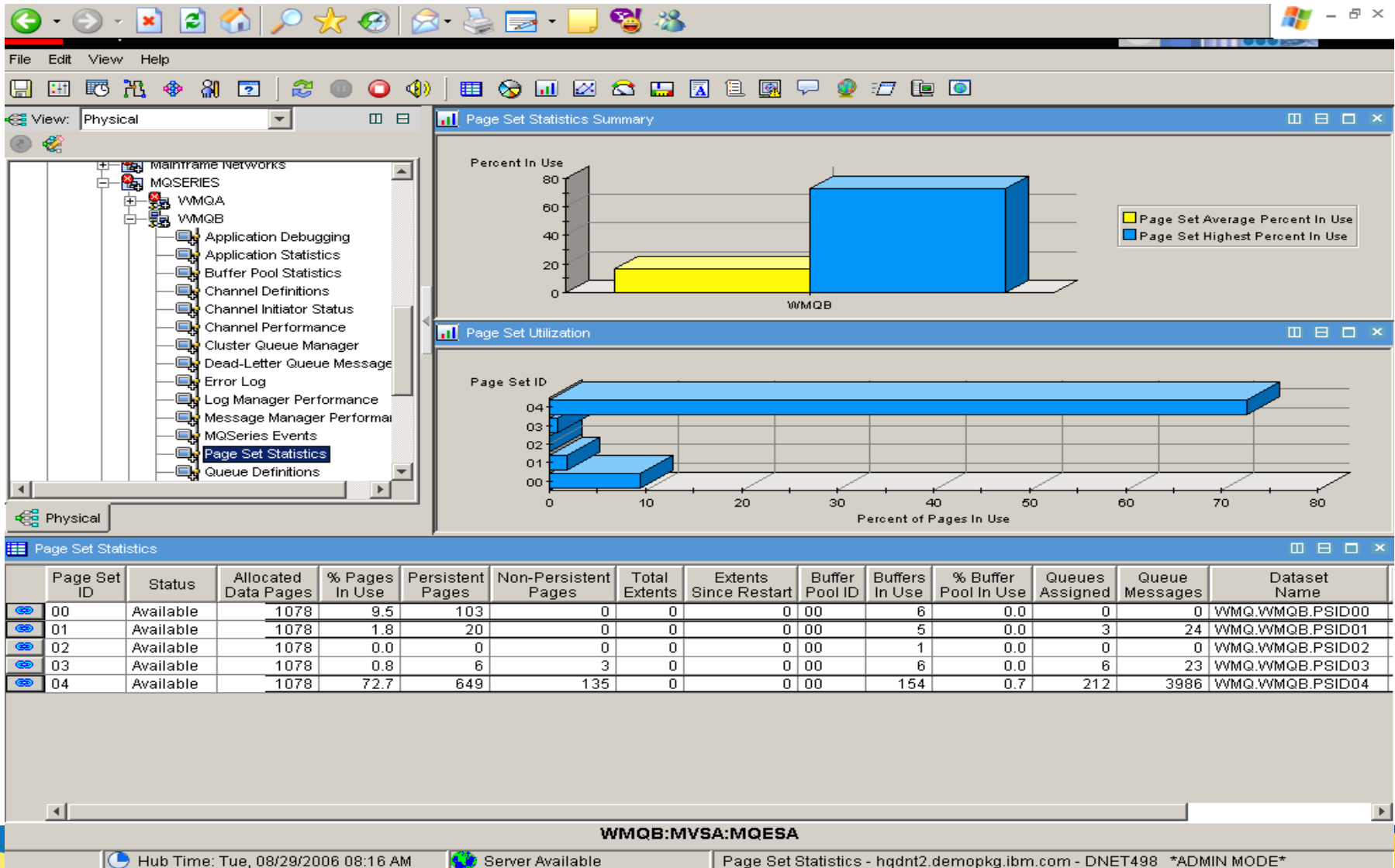
Log Manager Performance - zOS



Message Manager Performance - zOS



Page Set Statistics - zOS



Summary

- Once introduced into an environment WMQ and WMB become ubiquitous.
- Monitoring/managing your messaging backbone in a silo is not adequate
- Start looking at your Enterprise Monitoring & Management strategy holistically.
- It may look like the problem is WMQ or WMB, maybe it is not.
- Use automation for corrective action when appropriate

Questions & Answers



Questions & Answers

