

***Capitalware's
MQ Visual Edit V2
The Next Generation***

Roger Lacroix
roger.lacroix@capitalware.com
<http://www.capitalware.com>

MQ Visual Edit V2 Introduction

- MQ Visual Edit allows users to view, manipulate and manage messages in a queue and/or a topic of an IBM MQ queue manager and presents the data in a simplified format similar to a database utility or spreadsheet program.
- MQ Visual Edit is a great tool for application programmers, JMS developers, quality assurance testers, and production support personnel.

MQ Visual Edit V2 for the Desktop

- Windows 7/8/8.1/10
- Linux (Desktop)
- Mac OS X 10.8 or higher (client mode only)

MQ Visual Edit V2 Features

- Create, update or delete messages in a queue.
- Open multiple queues from multiple queue managers.
- Support for Publish/Subscribe.
- Create or update messages in a topic.
- Open multiple topics from multiple queue managers.

MQ Visual Edit V2 Features (2)

- Import/Export messages to/from files.
- Backup/Restore messages & MQMD to/from a file.
- Generate a PDF report from one or more messages.
- Edit a message's MQMD fields and Named Properties.
- Compare a message to a file & highlight differences.

MQ Visual Edit V2 Features (3)

- Cut, copy & paste between other applications.
- Messages can be edited in Hex Editor & XML Editor
- Supported formats: MQMD, MQRFH, MQRFH2, MQCIH, MQDEAD, MQEVENT, MQIIH, MQXMIT, MQHSAP & SMQBAD.
- Support for 8 languages: English, Dutch, French, German, Italian, Portuguese, Romanian & Spanish.

MQ Visual Edit V2 Features (4)

- 4 Stress Testing Tools
- 4 Monitors for Queues:
 - ◆ Queue Monitor
 - ◆ Queue Statistics Monitor
 - ◆ Queue Status Monitor (new)
 - ◆ Visual Queue Depth

MQ Visual Edit V2 Features (5)

- New 2 Pub/Sub Monitors
 - ◆ Topic Monitor
 - ◆ Subscription Monitor

MQ Visual Edit V2

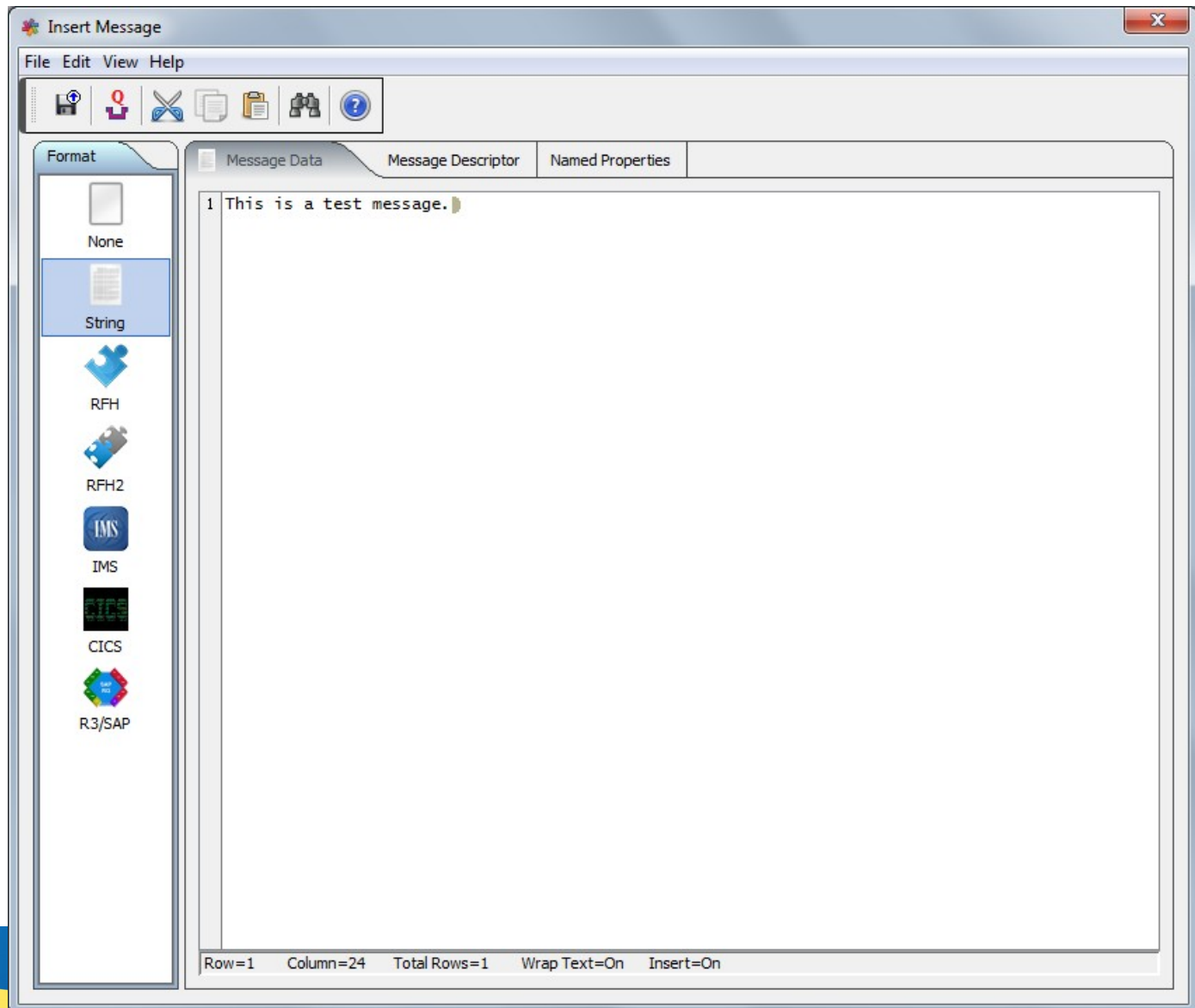
The screenshot displays the MQ Visual Edit V2 application window titled "TEST.Q1 on MQWT1". The interface is divided into several panes:

- Queue Managers:** A tree view on the left showing a hierarchy of queue managers. Under "Windows", "MQWT1" is selected and expanded, showing sub-queues like "MQWT1 - Test Send Exit", "MQWT1 remote", etc.
- Message Descriptor:** A pane on the right showing the details of a selected message. It includes fields such as "Accounting Token", "Application Identity...", "Backout Count", "Coded Character S...", "Correlation ID", "Data Length", "Encoding", "Expiry Interval", "Feedback Code", "Format", "Group ID", "Group ID in Hex", "Logical Sequence N...", "Message Flags", "Message ID", "Message ID in Hex", "Message Type", "Offset", "Original Length", "Persistence", "Priority", "Put-Application Name", and "Put-Application Type".
- Queue Status:** A pane at the bottom left showing the status of the selected queue. It includes fields like "Current Depth", "Maximum Depth", "Type", "Open Input Count", "Open Output C...", "Get", and "Put".
- Message Content:** The central pane displays the message data, showing two lines of text: "1 In MQSeries, intercommunication means sending mess" and "2 In MQSeries, intercommunication means sending mess".

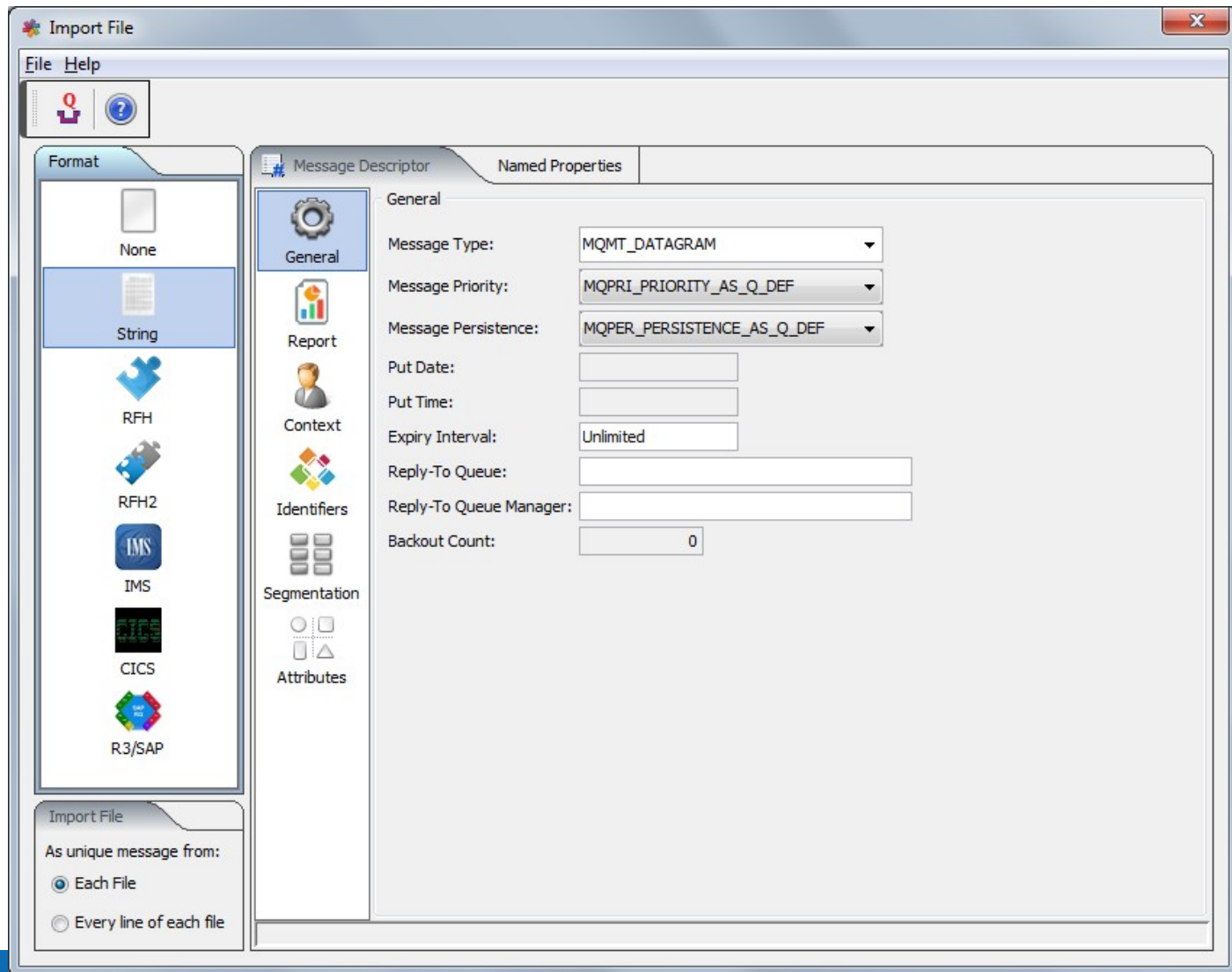
Field	Value
Accounting Token	úæĹ ŐëĀ...
Application Identity...	
Application Origin D...	
Backout Count	0
Coded Character S...	437
Correlation ID	...
Correlation ID in Hex	0000000000000000...
Data Length	489
Encoding	273
Expiry Interval	Unlimited
Feedback Code	0
Format	MQSTR
Group ID	...
Group ID in Hex	0000000000000000...
Logical Sequence N...	1
Message Flags	NONE
Message ID	AMQ MQA1 ĹĹ...
Message ID in Hex	414D51204D51413...
Message Type	Datagram
Offset	0
Original Length	-1
Persistence	Persistent
Priority	0
Put-Application Name	\Capitalware\MQVE...
Put-Application Type	Windows

Field	Value
Current Depth	2
Maximum Depth	50000
Type	Local
Open Input Count	0
Open Output C...	0
Get	Enabled
Put	Enabled

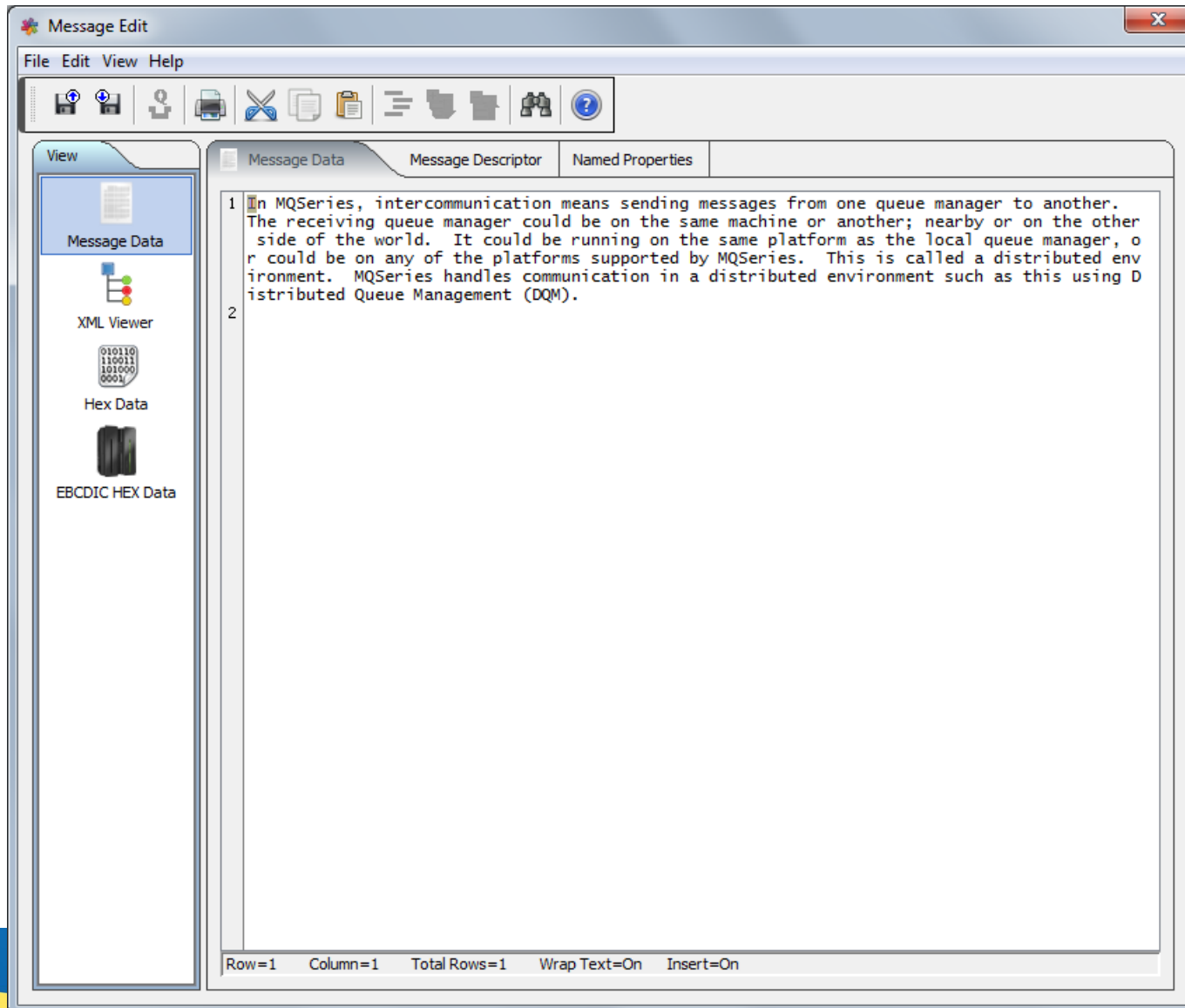
MQ Visual Edit V2



MQ Visual Edit V2



MQ Visual Edit V2



Questions & Answers

