



***MQ Technical
Conference v2.0.1.4***

September 29 – October 1, 2014

Sandusky, Ohio

www.mqtechconference.com

Conference Directory



MQ Technical Conference v2.0.1.4 is the largest conference in the world solely dedicated to IBM MQ.



Monitor WebSphere MQ and Broker Health

Qflex is the most advanced, middleware monitoring product. Detect issues with queues, queue managers, brokers and flow automatically. Just add resources to Qflex, we will take care of the rest.

No Agents. Easy to install and maintain.

Qflex has the lowest cost of ownership among competition because our product is agentless. Agent based products require constant upgrades and making sure that the agents themselves are running.

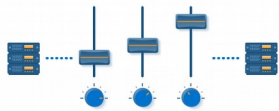
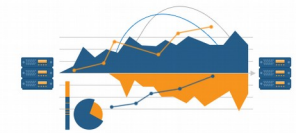


Detect fast and fix fast!

Qflex can detect product problems before they happen. For example if consumer disconnects from queue manager, Qflex will alert before queue begins to fill up.

Analyze you message flow

Qflex can help you understand Message Broker flow performance node by node. Spot bottlenecks right away. Historical performance will show exactl when performance dropped.



WebSphere MQ Change Management

With Qflex you can detect every change that has been made to WebSphere MQ as well as who made it and when. Using our change management facilities, you can approve changes, reject them or schedule for further deployment to other environments.

Data 1 - 50		Data 51 - 100	
1	Charles John Huffham Dickens, 1812-1870Charles D	ickens led a very active life, always setting afu	ll schedule for
2	webSphere MQ classes for Java (also referred to as	WebSphere MQ base Java)allow a program written in	the Java progr
3	<?xml version="1.0" encoding="ISO-8859-1"?><!DOC	TYPE Order><Order xmlns="http://www.example.com/	myschema.xml">
4	<?xml version="1.0" encoding="ISO-8859-1"?><!DOC	TYPE Order><Order xmlns="http://www.example.com/	myschema.xml">
5	<?xml version="1.0" encoding="ISO-8859-1"?><!DOC	TYPE Order><Order xmlns="http://www.example.com/	myschema.xml">
6	<?xml version="1.0" encoding="ISO-8859-1"?><!DOC	TYPE Order><Order xmlns="http://www.example.com/	myschema.xml">

Capitalware's **MQ Visual Edit** allows users to view, manipulate and manage messages in a queue of a IBM MQ queue manager and presents the data in a simplified format similar to a database utility or spreadsheet program.

MQ Visual Edit is a great tool for application programmers, JMS developers, quality assurance testers, and production support personnel. The tool allows for quick problem solving because the data is presented in a very logical and insightful manner.

Table of Contents

GENERAL INFORMATION.....	1
SPONSOR PAVILION.....	2
PLATINUM SPONSORS.....	2
GOLD SPONSORS.....	2
SILVER SPONSORS.....	4
PAVILION HOURS.....	5
SPONSOR PAVILION LAYOUT.....	5
SCHEDULE.....	6
MQ SESSIONS.....	9
AN OVERVIEW OF MQ CLUSTERING.....	9
CONSIDERATIONS WHEN USING IBM MQ AND JMS WITH JEE APPLICATION SERVERS.....	9
HIGH AVAILABILITY OPTION FOR MQ.....	9
HOW TO BUILD & OPERATE A CERTIFICATE MANAGEMENT CENTER OF MEDIOCRITY.....	9
IBM MQ DISASTER RECOVERY.....	10
IBM MQ INTERNALS, PERFORMANCE AND TUNING FOR DISTRIBUTED PLATFORMS.....	10
IBM MQ "GOLDEN IMAGE" QUEUE MANAGERS.....	10
IBM MQ PERFORMANCE ANALYSIS.....	11
SO YOU THINK YOU UNDERSTAND MULTI-INSTANCE QUEUE MANAGERS?.....	11
INTRODUCTION TO MQ.....	11
JMS 2.0 - SUPPORTED BY MQ V8.....	11
KEEPING MQ CHANNELS UP AND RUNNING.....	12
MIGRATE FROM OLDER VERSIONS OF MQ TO MQV7.1/7.5/8.0.....	12
MEET THE EXPERTS.....	12
MQ CHLAUTH RULES - INCLUDING V8 CHANGES.....	12
MQ CLIENTS.....	13
MQ CONNECTION AUTHENTICATION (NEW IN V8).....	13
MQ PROBLEM DETERMINATION WITH TRACING ON LINUX.....	13
MQ PUBLISH/SUBSCRIBE TOPICS OBJECTS, NODES, STRINGS...?.....	13
MQ SSL/TLS CHANNELS - INCLUDING V8 CHANGES.....	14
MQ TRIGGERING.....	14
OPEN DISCUSS ABOUT ANYTHING MQ.....	14
PUBLISH/SUBSCRIBE IN AN MQ NETWORK - INCLUDING V8 CHANGES.....	14
SSL AND TLS EXPLAINED: A USER PERSPECTIVE.....	15
THE TOP TEN ISSUES IN IBM MQ AND WEBSPHERE MB.....	15
THE VALUE OF MQ STATS BY BUSINESS UNIT.....	15
USING WEBSPHERE EXITS TO TRACK TRANSACTIONS THRU COMPOSITE APPLICATIONS.....	16
IBM MQ JUST WORKS.....	16
WHAT CAN YOU ACHIEVE WITH MQ CLUSTERS?.....	16
WHAT I DID ON MY SUMMER VACATION (IN HURSLEY).....	17
WHAT'S NEW IN IBM MESSAGING.....	17
WMQ TOOLBOX: 20 SCRIPTS, ONE-LINERS, & UTILITIES FOR UNIX & WINDOWS.....	17
MQ Z/OS SESSIONS.....	18
ARE Z/OS AND DISTRIBUTED PLATFORMS LIKE OIL AND WATER?.....	18

IBM MQ FOR z/OS: LATEST FEATURES DEEP DIVE.....	18
IBM MQ IN A 'PLEX: SHARED QUEUES AND APPLICATIONS.....	18
IMS ADAPTER AND BRIDGE OVERVIEW.....	18
MQ SECURITY WITH CA ACF2.....	18
NEW WITH MQ V8 ON z/OS: CHANNEL STATISTICS AND ACCOUNTING.....	19
MQ LIGHT SESSIONS.....	20
MQ LIGHT SESSION.....	20
IBM MQ MANAGED FILE TRANSFER SESSIONS.....	21
MFT SESSION.....	21
IBM INTEGRATION BUS (MESSAGE BROKER) SESSIONS.....	22
INTEGRATION BUS OVERVIEW.....	22
IIB SCALABILITY & PERFORMANCE MANAGEMENT.....	22
LEVERAGING WBI (BROKER) MONITORING.....	22
PERFORMANCE CONSIDERATIONS WITH IBM MQ AND IBM INTEGRATION BUS.....	23
WLM AND POLICY IN INTEGRATION BUS.....	23
VENDOR SESSIONS.....	24
APPLICATION API TRACKING.....	24
FILE TRANSFER WITH UNIVERSAL FILE MOVER.....	24
MQAUSX vs MQ v8 AUTHENTICATION.....	24
MO71'S HIDDEN GEMS.....	24
APPLICATION PERFORMANCE MANAGEMENT.....	24
THE VALUE OF VISIBILITY AMONGST INTERCONNECTED MIDDLEWARE ASSETS.....	25
INFRARED360 AND THE INTERNET OF RELEVANT THINGS.....	25
BEYOND JUST MONITORING MQ.....	25
IF YOU CAN'T CLONE YOURSELF... DELEGATE!.....	26
TxMQ INTRODUCES IBM MQ PERFORMANCE PACK.....	26

General Information

Hotel Information

Kalahari Resorts 7000 Kalahari Dr, Sandusky, OH 44870. Phone number: 877-525-2427

Hotel Registration

Check-in begins at 4:00pm. Should you arrive as early as 12:00pm, you can pre-register and begin to enjoy the Waterparks. Check out is no later than 11:00am.

Luggage Storage

If you arrive early or check-out prior to the conclusion of the conference, please have the bell desk hold your luggage. Luggage will not be permitted in any of the sessions.

Ground Transportation

Taxis are available from the main hotel lobby. Call Kalahari's Concierge at 419-433-7200, ext. 34089 for scheduling and pricing. You can use Tom's Limo Service at 888-303-1669 for a shuttle.

Attire

Business casual attire is appropriate. Temperatures vary in the hotel.

Smoking Policy

Smoking is not permitted in the hotel or the conference area.

Cell Phones and Pages

Please turn off all cell phones and pagers when you attend sessions. It is distracting to both the speaker and the other attendees.

Conference Registration and Information

The conference Registration and Information Desk is located outside of the Zambezi room. It is open for registration on Sunday, September 28th from 4:00PM to 6:00PM and Monday, September 29th from 7:30AM to 12:00PM (noon).

Expenses

You are responsible for all travel, lodging and conference charges. Lodging and incidentals charged to your room are to be paid to the hotel upon check out.

Name Badges

Conference name badges must be worn and be visible for admittance to all scheduled sessions and meal functions, including the sponsor's pavilion.

Meals

Breakfast and lunch will be served each full day of the conference. There will be a morning coffee break and afternoon refreshment break each full day of the conference.

Sponsor Pavilion

Platinum Sponsors



Capitalware Inc. is a product development firm specializing in messaging middleware space. Capitalware provides products, services, and training for IBM MQ to companies across North America. Capitalware sells 12 commercial products in the IBM MQ space. Capitalware also support 6 'licensed as free' products and 8 'open source' projects in the IBM MQ space. The products range from developer tools to security solutions.

www.capitalware.com

Booth P1

Gold Sponsors



Avada Software specializes in Enterprise Middleware solutions. Founded by some pioneers in SOA, MQ and J2EE technology, Avada Flagship product, Infrared360, is a holistic & innovative private cloud enabled portal providing administration, monitoring, testing, auditing & statistical reporting for Enterprise Middleware including IBM MQ, Tibco EMS, WAS, JBoss, TC Server, WMB and tangent technologies such as Datapower. Infrared360 is a single web application, yet scales to 2500+ endpoints without deploying anything (no agents, no scripts) to those endpoints. Using Secure Collaboration™ and delegated administration, the portal uniquely provides different business units or even different application users delegated virtual environments in which to work.

www.avadasoftware.com

Booth G4



Nastel Technologies is a premier global provider of middleware-centric application performance management solutions for mission-critical applications from the datacenter to the cloud and is the only monitoring vendor with a unified platform to support all software and appliance-based middleware technology requirements.

Nastel AutoPilot® for IBM MQ provides monitoring and management capabilities and is considered the best-of-breed management solution. AutoPilot provides enterprises with deep dive visibility into the root-cause of problems. It's real-time analytics using Complex Event Processing reduce the frequency of outages and reduce false-positives. Autopilot can also detect problems before users are impacted, keeping support costs low and productivity high.

www.nastel.com

Booth G1



TxMQ, headquartered in Buffalo, NY, is an IBM Premier Business Partner delivering enterprise IT solutions, services and staffing to clients across North America for over 30 years. TxMQ provides a full spectrum of professional IT/IS services, including WebSphere software sales, implementation, support, training, and staff-aug services. Our focus today includes consulting and services in WebSphere, BPM, BI/Datawarehousing, systems management and administration, database management and administration, as well as network support and management on most major platforms and systems.

www.txmq.com

Booth G3



IBM offers integrated software and solutions for all of your business and organizational challenges.

www.ibm.com

Booth G2

Silver Sponsors



MQGem Software is dedicated to providing affordable IBM® WebSphere® MQ services and utilities. Founded by Paul Clarke, a former member of the MQ Development team, the company provides Products, Utilities, Consultancy and Education in the area of IBM MQ.

The MQGem MO71 product has been used extensively all over the world by companies to monitor and administer their MQ networks since 1996 when it was written for the Atlanta Olympic Games. MQGem's MQSCX product radically extends the MQSC command language improving the interactive experience and allowing command files which can react to responses from the Command server allowing command scripting.

www.mqgem.com



WHAT IS QFLEX BY NETFLEXITY?

- Qflex is a WebSphere MQ and WebSphere Message Broker Monitoring Facility
- Qflex offers Statistics collection and comprehensive Reporting Facility
- Qflex is a web-based application that is constantly monitoring your messaging infrastructure
- Qflex is accessible from anywhere via browser

www.netflexity.com

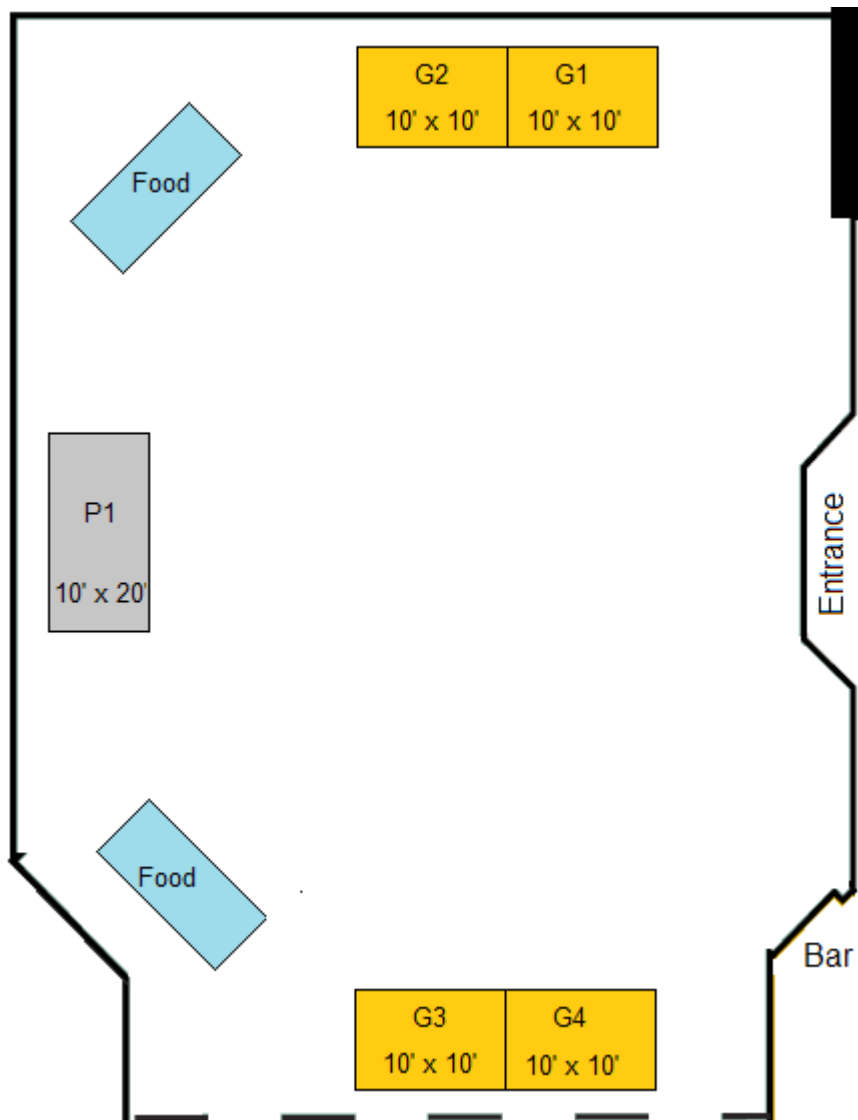
Pavilion Hours

The Sponsor Pavilion will be held in the Zambezi room at the following hours:

Monday, September 29th, 2014 – 5:00PM to 8:00PM

Tuesday, September 30th, 2014 – 5:00PM to 8:00PM

Sponsor Pavilion Layout



Schedule

Monday		Nile & Orange	Aloeswood	Leopardwood	Rosewood	Sagewood	Zebra-wood
Start	End						
07:30	09:00	Breakfast					
08:30	08:45	Opening Remarks					
08:45	09:45	MFT session Matthew Whitehead	MQ Publish/Subscribe topics - objects, nodes, strings? Dave Ware	Integration Bus Overview Bobbee Broderick	IBM MQ in a 'plex: Shared queues and applications Lyn Elkins	What's New in IBM Messaging Mark Taylor	
09:45	10:00	Break					
10:00	11:00	How To Build & Operate a Certificate Management Center of Mediocrity T.Rob Wyatt	IBM MQ Performance Analysis Glen Brumbaugh	Considerations when using IBM MQ and JMS with JEE Application Servers Chris Frank	Keeping MQ Channels Up And Running Paul Clarke	MQ CHLAUTH rules - Including V8 changes Morag Hughson	
11:00	11:15	Break					
11:15	12:00	The Value of Visibility Amongst Interconnected Middleware Assets Peter D'Agosta	MQAUSX vs MQ v8 Authentication Roger Lacroix	Beyond just monitoring MQ Richard Nikula	TxMQ Introduces WebSphere MQ Performance Pack Allan Bartleywood		
12:00	13:00	Lunch					
13:00	14:00	JMS 2.0 - supported by MQ V8 Matthew Whitehead	Publish/Subscribe in an MQ network - including V8 Changes Dave Ware	WLM and Policy in Integration Bus Bobbee Broderick	IBM MQ for z/OS: Latest Features Deep Dive Lyn Elkins	IBM MQ Disaster Recovery Mark Taylor	
14:00	14:10	Break					
14:10	15:10	Migrate from MQ7.0 to MQ7.1/MQ7.5/MQ8.0 Suganya Rane	Introduction to MQ Roger Lacroix	The Value of MQ Stats by Business Unit Peter D'Agosta	IBM MQ Just Works Allan Bartleywood	MQ SSL/TLS Channels - Including V8 changes Morag Hughson	
15:10	15:20	Break					
15:20	16:20	WMQ Toolbox: 20 Scripts, One-liners, & Utilities for UNIX & Windows T.Rob Wyatt	IIB Scalability & Performance Management Cindy Gregoire	So You Think You Understand Multi-Instance Queue Managers? Chris Frank	MQ Clients Paul Clarke	IBM MQ: Are z/OS & distributed platforms like oil & water? Lyn Elkins & Mark Taylor	
16:20	16:30	Break					
16:30	17:30	Open Discussion About Anything MQ	SSL and TLS Explained: A User Perspective Glen Brumbaugh	MQ Problem Determination With Tracing on Linux Tim Zielke	The top ten issues in IBM MQ and WebSphere MB Barry Lamkin	Using WebSphere Exits to Track Transactions Thru Composite Applications Bob Zerbe	
17:00	20:00	Sponsor Pavilion in Zambezi					

Tuesday		Nile & Orange	Aloeswood	Leopardwood	Rosewood	Sagewood	ZebraWood
07:30	09:00	Breakfast					
08:45	09:45	What I did on my summer vacation (in Hursley) T.Rob Wyatt	IBM MQ "Golden Image" Queue Managers Glen Brumbaugh	Performance Considerations with IBM MQ and IBM Integration Bus Chris Frank	MQ Triggering Paul Clarke	MQ Connection Authentication (new in V8) Morag Hughson	
09:45	10:00	Break					
10:00	11:00	MQ Light Session Matthew Whitehead	What can you achieve with MQ clusters? Dave Ware	High Availability Option For MQ Bobbee Broderick	New with MQ V8 on z/OS: Channel statistics & accounting Lyn Elkins	IBM MQ Internals, Performance and Tuning For Distributed Platforms Mark Taylor	
11:00	11:15	Break					
11:15	12:00	Infrared360 and the Internet of Relevant Things Peter D'Agosta	Managed file transfer with Universal File Mover Roger Lacroix	Application Performance Management Barry Lamkin	MO71's Hidden Gems Paul Clarke		
12:00	13:00	Lunch					
13:00	14:00	An Overview of MQ Clustering Suganya Rane	MQ Security with CA ACF2 Roger Lacroix	Integration Bus Overview Bobbee Broderick	Using WebSphere Exits to Track Transactions Thru Composite Applications Bob Zerbe	MQ CHLAUTH rules - Including V8 changes Morag Hughson	
14:00	14:10	Break					
14:10	15:10	MFT session Matthew Whitehead	IBM MQ Performance Analysis Glen Brumbaugh	MQ Problem Determination With Tracing on Linux Tim Zielke	Keeping MQ Channels Up And Running Paul Clarke	The Value of MQ Stats by Business Unit Peter D'Agosta	
15:10	15:20	Break					
15:20	16:20	How To Build & Operate a Certificate Management Center of Mediocrity T.Rob Wyatt	Leveraging WBI (Broker) Monitoring Richard Nikula	Considerations when using IBM MQ and JMS with JEE Application Servers Chris Frank	IBM MQ in a 'plex: Shared queues and applications Lyn Elkins	What's New in IBM Messaging Mark Taylor	
16:20	16:30	Break					
16:30	17:30	Migrate from MQ7.0 to MQ7.1/MQ7.5/MQ8.0 Suganya Rane	MQ Publish/Subscribe topics - objects, nodes, strings? Dave Ware	IBM MQ Just Works Allan Bartleywood	IIB Scalability & Performance Management Cindy Gregoire	Meet the Experts	
17:00	20:00	Sponsor Pavilion in Zambezi					

Wednesday		Nile & Orange	Aloeswood	Leopardwood	Rosewood	Sagewood	ZebraWood
07:30	09:00	Breakfast					
08:45	09:45	JMS 2.0 - supported by MQ V8 Matthew Whitehead	SSL and TLS Explained: A User Perspective Glen Brumbaugh	So You Think You Understand Multi-Instance Queue Managers? Chris Frank	IBM MQ for z/OS: Latest Features Deep Dive Lyn Elkins	IBM MQ Disaster Recovery Mark Taylor	
09:45	10:00	Break					
10:00	11:00	WMQ Toolbox: 20 Scripts, One-liners, & Utilities for UNIX & Windows T.Rob Wyatt	Publish/Subscribe in an MQ network - including V8 Changes Dave Ware	WLM and Policy in Integration Bus Bobbie Broderick	MQ Clients Paul Clarke	MQ SSL/TLS Channels - Including V8 changes Morag Hughson	
11:00	11:15	Break					
11:15	12:00	TxMQ Introduces WebSphere MQ Performance Pack Allan Bartleywood	Application API Tracking Roger Lacroix	If You Can't Clone Yourself... Delegate! Richard Nikula	MO71's Hidden Gems Paul Clarke	Application Performance Management Barry Lamkin	
12:00	13:00	Lunch					
13:00	14:00	An Overview of MQ Clustering Suganya Rane	IBM MQ "Golden Image" Queue Managers Glen Brumbaugh	Performance Considerations with IBM MQ and IBM Integration Bus Chris Frank	New with MQ V8 on z/OS: Channel statistics & accounting Lyn Elkins	IBM MQ Internals, Performance and Tuning For Distributed Platforms Mark Taylor	
14:00	14:10	Break					
14:10	15:10	MQ Light Session Matthew Whitehead	IMS Adapter and Bridge Overview Roger Lacroix	High Availability Option For MQ Bobbie Broderick	MQ Triggering Paul Clarke	MQ Connection Authentication (new in V8) Morag Hughson	
15:10	15:20	Break					
15:20	16:20	What I did on my summer vacation (in Hursley) T.Rob Wyatt	What can you achieve with MQ clusters? Dave Ware	Leveraging WBI (Broker) Monitoring Richard Nikula	The top ten issues in IBM MQ and WebSphere MB Barry Lamkin	IBM MQ: Are z/OS & distributed platforms like oil & water? Lyn Elkins & Mark Taylor	
16:20	16:30	Closing Remarks					

MQ Sessions

An Overview of MQ Clustering

Speaker: Suganya Rane

Technical Level: Intermediate

This session will entail the purpose and goals of MQ clustering, how it works. It will also talk about Workload Management considerations, along with a brief discussion about the full repository considerations. We will also talk about what's new in V7.1 and V7.5 MQ clustering and talk about some best practices when it comes to MQ clustering.

Time slots: Tuesday at 13:00; Wednesday at 13:00

Considerations when using IBM MQ and JMS with JEE Application Servers

Speaker: Chris Frank, IBM

Technical Level: Intermediate

This session covers using WebSphere MQ as the JMS provider with Java Enterprise Edition (JEE) application servers. Topics will include integration choices, configuration of the WebSphere MQ JCA Resource Adapter(RA) as well as options for Factory and Destination objects of particular interest to JEE applications. Best practice advice for more advanced scenarios will be discussed, including high availability and building performance optimised JEE applications corresponding to the use of WebSphere MQ. Both application and administrative considerations will be included.

Time slots: Monday at 10:00; Tuesday at 15:20

High Availability Option for MQ

Speaker: Robert Broderick, IBM

Technical Level: Intermediate to Novice

In a demanding world you need your systems up 25x8. This session talks about some of the common ways to approach High Availability and some of the uncommon approaches customers use to achieve a 100% customer facing ability.

Time slots: Tuesday at 10:00; Wednesday at 14:10

How To Build & Operate a Certificate Management Center of Mediocrity

Speaker: T.Rob Wyatt, IoPT Consulting

Technical Level: Intermediate

A Center of Excellence is hard to do, especially with for certificate management. Most shops opt for a Center of Mediocrity instead. The only problem is that most of them do not realize that's what they have. Want to know what to look for in an internal CA? Be careful what you ask for!

Time slots: Monday at 10:00; Tuesday at 15:20

IBM MQ Disaster Recovery

Speaker: Mark Taylor, IBM

Technical Level: Intermediate

This session discusses how to build, test and manage your MQ infrastructure so that you can be up and running quickly in the event of a disaster. Topics will include managing configurations, storage, MQ clusters and networks; and will look at a range of qualities of service that can be achieved using different techniques.

Time slots: Monday at 13:00; Wednesday at 8:45

IBM MQ Internals, Performance and Tuning For Distributed Platforms

Speaker: Mark Taylor, IBM

Technical Level: Advanced

This session takes you through the internal design of major portions of the queue manager, to show how applications can be made to perform at their best. Learn about the best way to code your applications, and why.

Time slots: Tuesday at 10:00; Wednesday at 13:00

IBM MQ "Golden Image" Queue Managers

Speaker: Glen Brumbaugh

Technical Level: Intermediate

Creating a Queue Manager is trivial ("crtmqm qmgr1"). There are several score of criteria, however, that should be considered when a Queue Manager is created. These include: (1) Security settings, (2) Monitoring/Information settings, (3) Core Queue Manager object creation (e.g. Listeners), (4) Default corporate objects (e.g. SvrConn administration channels), Startup control (e.g. Channel Initiator, Command Server, Trigger Monitor, etc.). This presentation covers all of the items that should be considered during Queue Manager creation and provides a sample "Golden Image" of a Queue Manager as a starting point for customization. The presentation also covers scripting as a means of standardization of all of the necessary settings as well as some of the challenges with scripting a Queue Manager installation. Administrators attending this presentation will leave with a complete "Golden Image" Queue Manager along with scripts than can automate the process.

Time slots: Tuesday at 8:45; Wednesday at 13:00

IBM MQ Performance Analysis

Speaker: Glen Brumbaugh

Technical Level: Intermediate

WMQ performance measurements require a high-level understanding of both the MQI interface and WMQ internals. With this understanding, a formal model of the WMQ system can be constructed and the key measurement points within the model identified. With the proper tools, the key measurement points within the model can be measured. This presentation provides the necessary background for an administrator to construct a model of a WMQ application and perform the necessary measurements.

The presentation includes: (1) An overview of the WMQ API (MQI), (2) An overview of WMQ internal processing of messages, (3) A generic performance model that can be adapted to the user's needs, (4) the tools that can be used to obtain the necessary measurements, and (4) the information that is available to put the measurements into the proper context. The contents of this presentation should allow a knowledgeable administrator to perform initial performance capacity measurements to answer questions like these: (1) How many messages per second can my application process? and (2) How will this application scale horizontally? The relationship between capacity planning, performance monitoring, and performance tuning is also discussed to put into proper perspective the activities discussed.

Time slots: Monday at 10:00; Tuesday at 14:10

So You Think You Understand Multi-Instance Queue Managers?

Speaker: Chris Frank, IBM

Technical Level: Intermediate

This session will discuss the use of multi-instance queue managers. This is not an introductory session, but will go into specifics of how multi-instance works, proper and improper ways of configuring, understanding the kinds of problems that can arise when using multi-instance queue managers, and tuning approaches that can be used when necessary. This sessions assumes a basic understanding of how multi-instance queue managers operate.

Time slots: Monday at 15:20; Wednesday at 8:45

Introduction to MQ

Speaker: Roger Lacroix, Capitalware Inc.

Technical Level: Novice

This session will introduce new users to IBM MQ. It will provide an overview to MQ objects such as, queue managers, queues, channels, namelists, etc.

Time slots: Monday at 14:10

JMS 2.0 - supported by MQ V8

Speaker: Matthew Whitehead, IBM

Technical Level: Intermediate

This session will cover the JMS 2.0 spec and how it differs to JMS 1.2, along with details about how to use MQ as a JMS 2.0 provider and how JMS applications can interoperate with MQ applications.

Time slots: Monday at 13:00; Wednesday at 8:45

Keeping MQ Channels Up and Running

Speaker: Paul Clarke, MQGem Software

Technical Level: Intermediate

This session discusses some techniques for keeping your channels up and running, concentrating on TCP/IP channels. We will look at the kinds of problems that can occur and the various mechanisms by which your channels can recover from or avoid these problems. This discussion will cover features such as Retry mechanisms, Dead Letter Queue, HeartBeats, AdoptMCA, TCP/IP KeepAlive, Batch Interval, Batch HeartBeats and Disconnect Interval.

Time slots: Monday at 10:00; Tuesday at 14:10

Migrate from older versions of MQ to MQV7.1/7.5/8.0

Speaker: Suganya Rane

Technical Level: Intermediate

This session will cover the upgrade process of MQ from any previous versions of MQ to MQV7.1/7.5/8.0. It will also cover effective backups and best practices that revolve around upgrading MQ and restoring the old queue manager. It will take into account the security changes and the extra channel authorizations that are necessary in order to upgrade successfully to a secure multi-instance queue manager.

Time slots: Monday at 14:10; Tuesday at 16:30

Meet the Experts

Speaker: Any available speakers

Technical Level: All

Join us at our "Meet the Experts" where you'll have a unique opportunity to learn, network and share MQ information with your peers and leading industry specialists.

Time slots: Tuesday at 16:30

MQ CHLAUTH rules - including V8 changes

Speaker: Morag Hughson, IBM

Technical Level: Intermediate

IBM MQ V7.1 introduced a new feature for securing channels, known as Channel Authentication Reocrds, or CHLAUTH for short. In IBM MQ V8 CHLAUTH had quite a few updates too. This new feature allows you to set rules to indicate which inbound connections are allowed to used your queue manager and which are banned. This session will take you through the concepts behind this new feature, how to create these rules and how to monitor and manage their use. New features in V8 will be highlighted as we go through, but this session is about all of CHLAUTH, not just about the V8 changes.

Time slots: Monday at 10:00; Tuesday at 13:00

MQ Clients

Speaker: Paul Clarke, MQGem Software

Technical Level: Novice

This session introduces the IBM MQ clients: what they are; on which platforms they run, and how customers use them in their applications. We will mainly focus on the 'C' MQI client but will also introduce the Java, JMS and XMS clients. The session will discuss a number of basic implementation considerations including when it may be appropriate to use each client. The intent is to familiarize you with the things necessary to succeed with a simple IBM MQ client implementation.

Time slots: Monday at 15:20; Wednesday at 10:00

MQ Connection Authentication (new in V8)

Speaker: Morag Hughson, IBM

Technical Level: Intermediate

Connection Authentication is a brand new security feature introduced in IBM MQ V8. It allows you to configure your queue manager to check passwords supplied by applications to authenticate them before they are allowed to do any work on that queue manager. This session will introduce how to configure your queue manager for this, and the ways in which applications can provide the user ID and password (which doesn't allow changing the code!).

Time slots: Tuesday at 8:45; Wednesday at 14:10

MQ Problem Determination with Tracing on Linux

Speaker: Tim Zielke

Technical Level: Intermediate

This session will discuss how an MQ administrator can use strmqtrc and the MH06 supportpac on Linux for problem determination and application review. The Application Activity Trace tool (new at 7.1 and higher) will be covered, as well. Finally, some native Linux concepts (i.e. /proc, strace, etc.) will be discussed on how they can help with MQ problem determination. The tracing concepts covered will generally apply to other distributed platforms.

Time slots: Monday at 16:30; Tuesday at 14:10

MQ Publish/subscribe topics objects, nodes, strings...?

Speaker: Dave Ware, IBM

Technical Level: Novice

MQ allows you to use the publish/subscribe model with ease with the introduction of topics, but what exactly is a topic? This session takes you through not just topics but the various publish/subscribe concepts and how they relate to MQ. Covering aspects of system design, configuration and application programming concepts. This session is essential for all users looking to adopt publish/subscribe with MQ or even those that are already using it but want to make sure they're aware of the breadth of concepts and features.

Time slots: Monday at 8:45; Tuesday at 16:30

MQ SSL/TLS Channels - including V8 changes

Speaker: Morag Hughson, IBM

Technical Level: Intermediate

So, you've gone to great lengths to control who has access to your queues, but would you care if someone could see the contents of your messages as they were transported across the network to another queue manager? Have you thought about encrypting the traffic across your channels? Would you like to be able to automatically authenticate the partner queue manager? Would you like all this to be integrated with your channels and provided free with IBM MQ? The IBM MQ product has had SSL/TLS protocol support in its channels since V5.3. This presentation recaps how to use SSL/TLS on your channels and includes a number of changes in this area from IBM MQ V8.

Time slots: Monday at 14:10; Wednesday at 10:00

MQ Triggering

Speaker: Paul Clarke, MQGem Software

Technical Level: Intermediate

MQ Triggering is a very powerful feature of MQ and yet it is often mis-understood. Do your IBM MQ applications or channels fail to trigger when you actually want them to trigger? Do they trigger too many times? This session describes how IBM MQ triggering works; it explains how to configure triggering to solve some common problems using best practices; and it shows how to extend the IBM MQ triggering function by writing your own Trigger Monitor.

Time slots: Tuesday at 8:45; Wednesday at 14:10

Open Discuss About Anything MQ

Speaker: N/A

Technical Level: All

This is a format-free session where attendees can discuss 'anything' MQ with other attendees.

Time slots: Monday at 16:30

Publish/subscribe in an MQ network - including V8 changes

Speaker: Dave Ware, IBM

Technical Level: Intermediate

The publish/subscribe model can be used across a network of MQ queue managers, whether in a manually configured topology or in an MQ cluster. This session looks in depth at designing such systems, covering a wide range of requirements from availability to scalability and how each can be solved. This session covers all versions of MQ since V7, including many details of the new MQ V8 features. A basic familiarity with MQ publish/subscribe is preferable, ideally by attending "MQ Publish/Subscribe topics - objects, nodes, strings?" beforehand.

Time slots: Monday at 13:00; Wednesday at 10:00

SSL and TLS Explained: A User Perspective

Speaker: Glen Brumbaugh

Technical Level: Novice to Intermediate

Secure Socket Layer (SSL) has evolved into Transport Layer Security (TLS). The use of these security protocols are essential for modern infrastructures, but are often poorly or impartially understood. This presentation covers the history of these protocols, what they were designed to do and, more importantly, what they were not designed to do. With this background, the process of using SSL/TLS in a WMQ infrastructure is reviewed. All phases of SSL implementation and certificate management are covered. The entire life cycle of a certificate is covered. The various standards and tools available to manipulate certificates are discussed with special emphasis on the iKeyMan tool, commonly used for WMQ.

Finally, WMQ specific requirements are covered and compared/contrasted to the usage of certificates on other platforms such as WebSphere Application Server.

Time slots: Monday at 16:30; Wednesday at 8:45

The Top Ten issues in IBM MQ and WebSphere MB

Speaker: Barry Lamkin, IBM

Technical Level: Intermediate

The IBM IBM MQ product is IBM's leading ESB Messaging Backbone, and WebSphere Message Broker is IBM's premier ESB based on IBM MQ. This session focuses on some of the more common problems that can arise and how to isolate them.

Time slots: Monday at 16:30; Wednesday at 15:20

The Value of MQ Stats by Business Unit

Speaker: Peter D'Agosta, Avada Software

Technical Level: Intermediate

Considering the rapidly increasing move to 'virtual' server environments, it becomes progressively more important that statistical information is provided to reflect not only the physical server environment, but the virtual environment upon which the applications run. And even 'within' the virtual environments, many applications are dedicated to specific business units. Reporting statistics of message usage by and for those particular business units is a critical requirement for CTOs and directors, who are responsible and accountable for the support of these business units.

Time slots: Monday at 14:10; Tuesday at 14:10

Using WebSphere Exits to Track Transactions Thru Composite Applications

Speaker: Bob Zerbe, BMC

Technical Level: Intermediate

This session focuses on how transaction monitoring can improve service delivery. Monitoring technology stacks is not enough to understand throughput across composite applications. Everyone monitors base technologies. When uptime is 99.9% but there are war rooms meetings to identify where the delays are, there is a need for improved visibility across the stacks.

We will review the configuring of API EXITS to obtain transaction visibility inside IBM MQ, WebSphere Message Broker, HTTP, WebSphere Application Server and DataPower. For each exit a sample will be provided including the caveats to setting it up. Understanding how to support Service Level Monitoring, transaction delay detection, prioritization of alert responses and latency decomposition for transactions will also be discussed. This session will not be vendor specific.

Time slots: Monday at 16:30; Tuesday at 13:00

IBM MQ Just Works

Speaker: Allan Bartleywood, TxMQ

Technical Level: Intermediate

Lecture with the following overviews: Why Does MQ Just Not Work? Lack of Architecture/Design/Standards of MQ - Poor Deployment Models - Poor Configuration of QManagers High Cost / Difficulty of Management & Support High risk of losing data due to QMgr sizing Design/process patterns of applications interfacing with MQ - Poor Process Models - Poor Performance Overall inability to deliver assured delivery of messages How do you make MQ Just Work? - Good architecture / design / standards - Low costs of management & support - Work with application dev on tuning app logic for processing messages - high throughput of data through the MQ environment - Quality practices, standards, measurable Overall, MQ can work for anyone. Find out how.

Time slots: Monday at 14:10; Tuesday at 16:30

What can you achieve with MQ clusters?

Speaker: Dave Ware, IBM

Technical Level: Intermediate

MQ Clustering can be used to solve many problems, from simplified administration and workload management in an MQ network, to horizontal scalability and continuous availability of messaging applications. This session will touch on the full range of uses of MQ Clusters to solve real problems, highlighting much of the underlying technology being used. A basic understanding of IBM MQ clustering would be beneficial.

Time slots: Tuesday at 10:00; Wednesday at 15:20

What I did on my summer vacation (in Hursley)

Speaker: T.Rob Wyatt, IoPT Consulting

Technical Level: Intermediate

IBM closed the Early Access Program for WMQ v8 with a workshop at Hursley. This session is a report of things learned, new issues discovered and some "gotchas" from the event. Most of this won't be in the Infocenter yet, if ever, and this session will not be repeated next year. (Because we hope it is out of date by then!)

Time slots: Tuesday at 8:45; Wednesday at 15:20

What's New in IBM Messaging

Speaker: Mark Taylor, IBM

Technical Level: Novice to Intermediate

This session is aimed to bring you up to date with the latest additions and enhancements to the IBM Messaging family of products. This session describes the latest product announcements including V8, and is intended to introduce many of the other sessions this week.

Time slots: Monday at 8:45; Tuesday at 15:20

WMQ Toolbox: 20 Scripts, One-liners, & Utilities for UNIX & Windows

Speaker: T.Rob Wyatt, IoPT Consulting

Technical Level: Intermediate

The pipe symbol is your command-line friend. If you string together the right combination of utility programs it is possible to automate really useful administrative tasks, and if you can do it on one line you get to wear the Wizard's hat around the office as an added bonus. So whether you want to become a scripting wizard and impress your friends, or just want to get stuff done, this session is for you.

Time slots: Monday at 15:20; Wednesday at 10:00

MQ z/OS Sessions

Are z/OS and distributed platforms like oil and water?

Speaker: Lyn Elkins & Mark Taylor, IBM

Technical Level: Intermediate

This session will compare the MQ for z/OS and distributed queue managers from both application and administration perspectives. How are they alike, how are they different, and what does that mean in a day in the life of an MQ administrator.

Time slots: Monday at 15:20; Wednesday at 15:20

IBM MQ for z/OS: Latest Features Deep Dive

Speaker: Lyn Elkins, IBM

Technical Level: Intermediate

This presentation covers some of the z/OS specific features in MQ V8, including above the bar bufferpools. We will look at what to expect when implementing the extended bufferpools, use cases where we expect them to be helpful and where they may not be as much. Other features will also be included with a brief touch on the new SMF data that can be produced from the channel initiator. It is intended for MQ for z/OS administrators and may be of particular interest to those who are implementing or using IBM Replication Server.

Time slots: Monday at 13:00; Wednesday at 8:45

IBM MQ in a 'plex: Shared queues and applications

Speaker: Lyn Elkins, IBM

Technical Level: Intermediate

This session covers migrating applications to use shared queues; including some of the common problems that can be avoided by applications while taking advantage of a highly available infrastructure. It is intended for application programmers and is at a basic level.

Time slots: Monday at 8:45; Tuesday at 15:20

IMS Adapter and Bridge Overview

Speaker: Roger Lacroix, Capitalware Inc.

Technical Level: Advanced

This session will discuss and highlight the differences between the IMS Adapter and the IBM Bridge for IBM MQ.

Time slots: Wednesday at 14:10

MQ Security with CA ACF2

Speaker: Roger Lacroix, Capitalware Inc.

Technical Level: Advanced

This session will provide information on how to configure CA's ACF2 for use with IBM MQ for z/OS.

Time slots: Tuesday at 13:00

New with MQ V8 on z/OS: Channel statistics and accounting

Speaker: Lyn Elkins, IBM

Technical Level: Intermediate

This session will cover the MQ V8 channel initiator statistics data and channel accounting records. There are record descriptions and examples from the updated report and dump programs, and most important, how the information can be used for capacity planning and tuning. If you are an MQ for z/OS administrator or capacity planner this session is for you. Everyone else will nap.

Time slots: Tuesday at 10:00; Wednesday at 13:00

MQ Light Sessions

MQ Light session

Speaker: Matthew Whitehead, IBM

Technical Level: Novice

An introduction to the MQ Light from a developer's perspective. How to rapidly add scalability and responsiveness to your applications using MQ Light (beta).

Time slots: Tuesday at 10:00; Wednesday at 14:10

IBM MQ Managed File Transfer Sessions

MFT session

Speaker: Matthew Whitehead, IBM

Technical Level: Intermediate

An overview of the features of MQ MFT, including the typical file-transfer use cases and how MQ MFT helps to implement them. The session will also cover interoperability with other IBM products, including Sterling Connect:Direct, DataPower, and IIB. Some knowledge of existing MQ concepts may be useful.

Time slots: Monday at 8:45; Tuesday at 14:10

IBM Integration Bus (Message Broker) Sessions

Integration Bus Overview

Speaker: Robert Broderick, IBM

Technical Level: Intermediate to Novice

Message Broker provides the integration capabilities to connect from anywhere to anything. It's capabilities center it as a key component in your SOA ESB. This presentation takes you into the new features of the rebranded IBM Integration Bus and shows you the new capabilities that will move your business forward.

Time slots: Monday at 8:45; Tuesday at 13:00

IIB Scalability & Performance Management

Speaker: Cindy Gregoire, TxMQ

Technical Level: Novice

This session presents the approach and scalability for implementing IIB on a smaller low cost scale, and managing the growth and acquisition costs for growing your SOA infrastructure. Lecture format discussing IIB implementation techniques and tools to implement and grow a small scale ESB into very large scale IIB environments, so that acquisition costs can be managed (and receive business approval) as utilization increases with SOA adoption as new applications are introduced in a way that facilitates management of rising IT costs and sharing of middleware infrastructure. Discussion items include: (1) Planning & Sizing (hardware, software, staffing, project startup); (2) Use of IBM TechLine and Pre-Sales resources during Project Initiation; (3) timing of training; (4) Monitoring and Management Tools; (5) Transition planning.

Time slots: Monday at 15:20; Tuesday at 16:30

Leveraging WBI (Broker) Monitoring

Speaker: Richard Nikula, Nastel Technologies

Technical Level: Intermediate

WBI (Broker) provides the ability to get considerable data about its operation and the behavior of your message flows. This session will cover the various interfaces to request data from the broker. This will include command line and programming interfaces to request status information, monitoring data publishing and message flow events. By attending this session, you will be able to better understand your broker operation and function.

Time slots: Tuesday at 15:20; Wednesday at 15:20

Performance Considerations with IBM MQ and IBM Integration Bus

Speaker: Chris Frank, IBM

Technical Level: Intermediate

This session will discuss considerations for designing and deploying well-performing IBM Integration Bus solutions. Discussed will be a number of factors that determine the level of performance achievable within an IIB environment, with a focus on effective use of WebSphere MQ. Also discussed will be some of the major improvements related to performance in recent releases.

Time slots: Tuesday at 8:45; Wednesday at 13:00

WLM and Policy in Integration Bus

Speaker: Robert Broderick, IBM

Technical Level: Intermediate to Novice

IBM Integration Bus has added many new features. The product can now throttle the workload so you can separate high processing requirements into low business requirements to lessen the impact on your important applications. This session show you the new capabilities.

Time slots: Monday at 13:00; Wednesday at 10:00

Vendor Sessions

Application API Tracking

Speaker: Roger Lacroix, Capitalware Inc.

Technical Level: Novice to Intermediate

This session will highlight how to track MQ API calls in a queue manager via MQ Auditor.

Time slots: Wednesday at 11:15

File transfer with Universal File Mover

Speaker: Roger Lacroix, Capitalware Inc.

Technical Level: Novice to Intermediate

This session will highlight the many managed file transfer features of Universal File Mover. Universal File Mover is a free open source project licensed under Apache License 2.

Time slots: Tuesday at 11:15

MQAUSX vs MQ v8 Authentication

Speaker: Roger Lacroix, Capitalware Inc.

Technical Level: Novice to Intermediate

In this session, we will demonstrate how to use authentication to securely lock-down the queue managers in a company's MQ environment and compare MQAUSX versus IBM MQ v8 authentication.

Time slots: Monday at 11:15

MO71's Hidden Gems

Speaker: Paul Clarke, MQGem Software

Technical Level: Novice to Intermediate

This session will mainly focus on MQGem's product MO71. MO71 is a graphical MQ Administration tool used by hundreds of companies all over the world to manage, configure and monitor their MQ networks. It is amazing, even after all these many years, how often I hear the words "Well, I didn't realise it could do that!". As such, this presentation will concentrate on the little known features of MO71. There will also be a quick introduction to MQGem's MQSC extension product MQSCX.

Time slots: Tuesday at 11:15; Wednesday at 11:15

Application Performance Management

Speaker: Barry Lamkin, IBM

Technical Level: Novice to Intermediate

Application Performance Management (APM) solutions help you manage the performance, availability and capacity of your applications, whether from a traditional data center or the Cloud. This session will present an overview of IBM's APM solutions, which includes understanding your end-user's experience, being able to gain a comprehensive view of your environment and applications from the front-end to the back-end to see how the pieces fit together, provide diagnostics to help find the root cause of bottlenecks and utilize predictive analytics to proactively manage dynamic trends.

Time slots: Tuesday at 11:15; Wednesday at 11:15

The Value of Visibility Amongst Interconnected Middleware Assets

Speaker: Peter D'Agosta, Avada Software

Technical Level: Intermediate

This session looks at typical transaction flows and the associated middleware environment in which they run, and treats them as they really are .. a set of interconnected technologies [e.g., MQ, Broker, WAS, Data Power, web services, etc.] that MUST work in concert to ensure that the applications and the related business processes meet their explicit and implicit SLAs. The presentation identifies typical and atypical problems that occur and impact the transaction flow, then addresses the challenges in proactively identifying where, across the range of different middleware layers, it is occurring, and ways to remedy the situation in a fast and efficient manner.

Time slots: Monday at 11:15

Infrared360 and the Internet of Relevant Things

Speaker: Peter D'Agosta, Avada Software

Technical Level: Novice

One of the hottest emerging technologies in 2013 has been the Internet of Things(IoT). To stay current and meet client demand, your organization's middleware tier - including the IBM WebSphere stack of application servers, enterprise messaging, transformation engines, and perimeter devices - must accommodate every device that may communicate to or from the middleware stack. Provide visibility into the things that are important to you and get to the source of any issue without getting lost in the forest of data.

Time slots: Tuesday at 11:15

Beyond just monitoring MQ

Speaker: Richard Nikula, Nastel Technologies

Technical Level: Beginner

The environment your MQ applications has continually increased in complexity over the years. Insight into MQ is essential but you need to be moving beyond just MQ. Nastel offers the most comprehensive MQ Management solution, offering administration, message management, and monitoring capabilities. But you can go beyond that with the ability to track messages, inside of MQ, through the broker, and including the applications that leverage them. Combined with the ability to provide self-service interfaces to the key stake holders, the management of these complex applications has never been simpler.

Time slots: Monday at 11:15

If You Can't Clone Yourself... Delegate!

Speaker: Richard Nikula, Nastel Technologies

Technical Level: Beginner

Improve productivity even when IT budgets are flat. Learn how self-service is the answer to IT requirements to do more with less. See how Shared Services and DevOps both benefit in improved productivity from MQ Self-service. Join us and discover:

- The meaning of self-service for WMQ
- Control over segregation of duties & privileged access
- How Apps, Shared Services and DevOps can work together

Time slots: Wednesday at 11:15

TxMQ Introduces IBM MQ Performance Pack

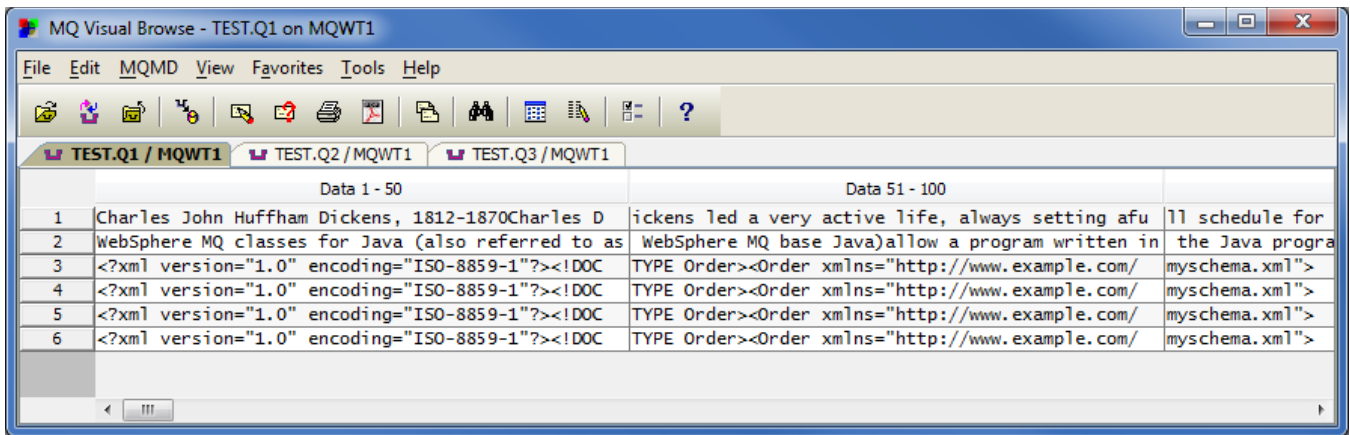
Speaker: Allan Bartleywood, TxMQ

Technical Level: Intermediate

The IBM MQ Performance Pack provides you with a quantifiable measured capacity of your MQ Infrastructure. A demonstration will showcase how the MQPPM enables the understanding of your entire MQ environment capacity and performance, or it can provide a segmented report. With configured scenarios MQPPM will be able to exercise just one targeted MQ layer or include WMB to also provide tuning opportunities and it is providing a Measureable, Quantifiable and Repeatable process.

Time slots: Monday at 11:15; Wednesday at 11:15

Capitalware's **MQ Visual Browse** application allows users to view (browse) messages in a queue of a IBM MQ queue manager.



MQ Visual Browse is a great tool for application programmers, JMS developers, quality assurance testers, and production support personnel who do NOT need message editing capabilities. The tool allows for quick problem solving because the data is presented in a very logical and insightful manner.

Capitalware's **MQ Batch Toolkit** allows users to manipulate, monitor and manage messages in a queue of a WebSphere MQ queue manager from a command-line or shell scripting environment. MQ Batch Toolkit is an excellent tool for developers, programmers, quality assurance testers, and production support personnel who want to do backup and recovery of messages, stress testing of applications, replaying of messages, searching (grep) a queue for a text string, etc..

MQ Security

- **Capitalware's MQ Authenticate User Security Exit** is a solution that allows a company to fully authenticate a user who is accessing a IBM MQ resource. It authenticates the user's UserID and Password against the server's native OS system, LDAP server, Microsoft's Active Directory, Quest Authentication Services, Centrify's DirectControl or an encrypted MQAUSX FBA file.
- **Capitalware's MQ Standard Security Exit** is a solution that allows a company to control and restrict who is accessing a IBM MQ resource.
- **Capitalware's MQ Channel Encryption** provides encryption for MQ message data. It is a solution that allows a company to encrypt message data, which flows between IBM MQ resources (i.e. over the channel).
- **Capitalware's MQ Message Encryption** is a solution that provides encryption for MQ message data while it resides in a queue and in the MQ logs (i.e. all data at rest).

MQ Audit/Tracking

- **Capitalware's MQ Auditor** is a solution that allows a company to audit / track all MQ API calls performed by MQ applications that are connected to a queue manager.

MQ z/OS Security

- **Capitalware's MQ Authenticate User Security Exit for z/OS** is a solution that allows a company to fully authenticate a user who is accessing a IBM MQ resource. It authenticates the user's UserID and Password against the server's native z/OS system or an encrypted MQAUSX FBA file.
- **Capitalware's MQ Standard Security Exit for z/OS** is a solution that allows a company to control and restrict who is accessing a z/OS IBM MQ resource.
- **Capitalware's MQ Channel Encryption for z/OS** provides encryption for MQ message data. It is a solution that allows a company to encrypt message data, which flows between IBM MQ resources (i.e. over the channel).